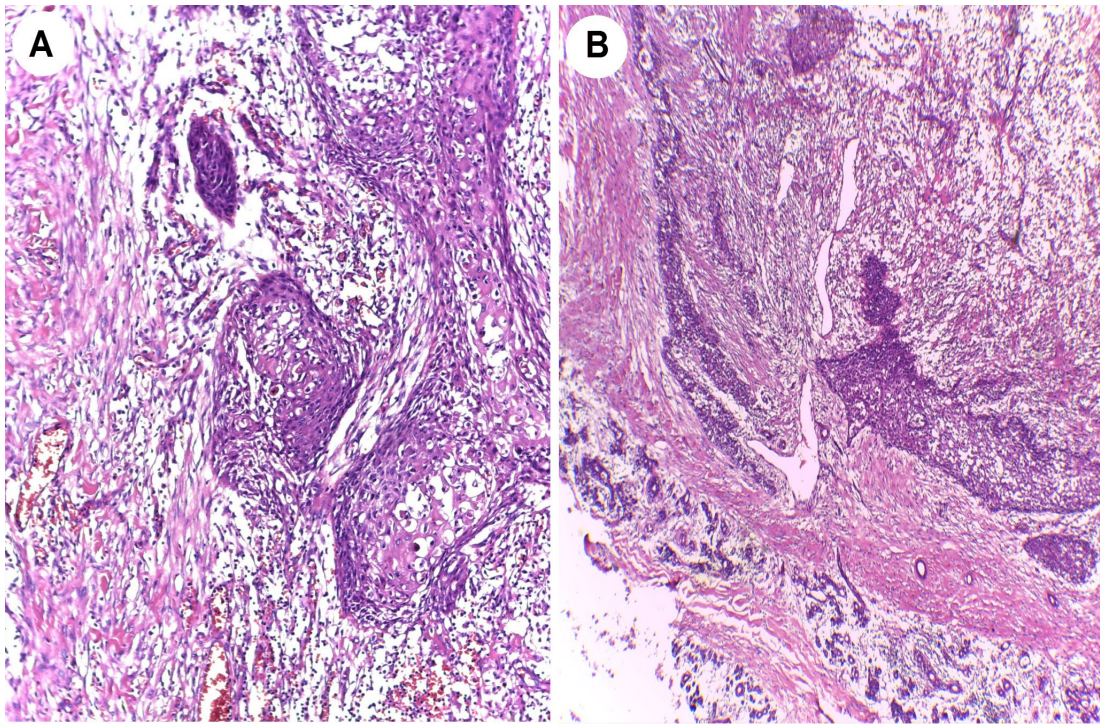
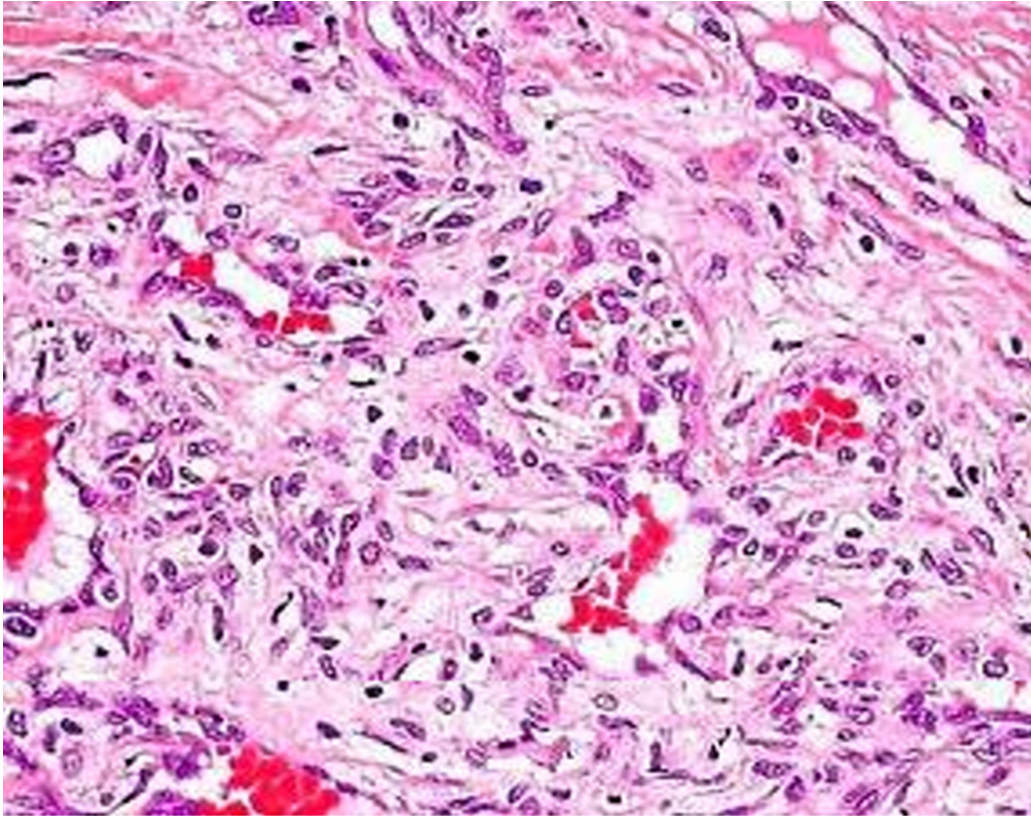


Section  
**6**

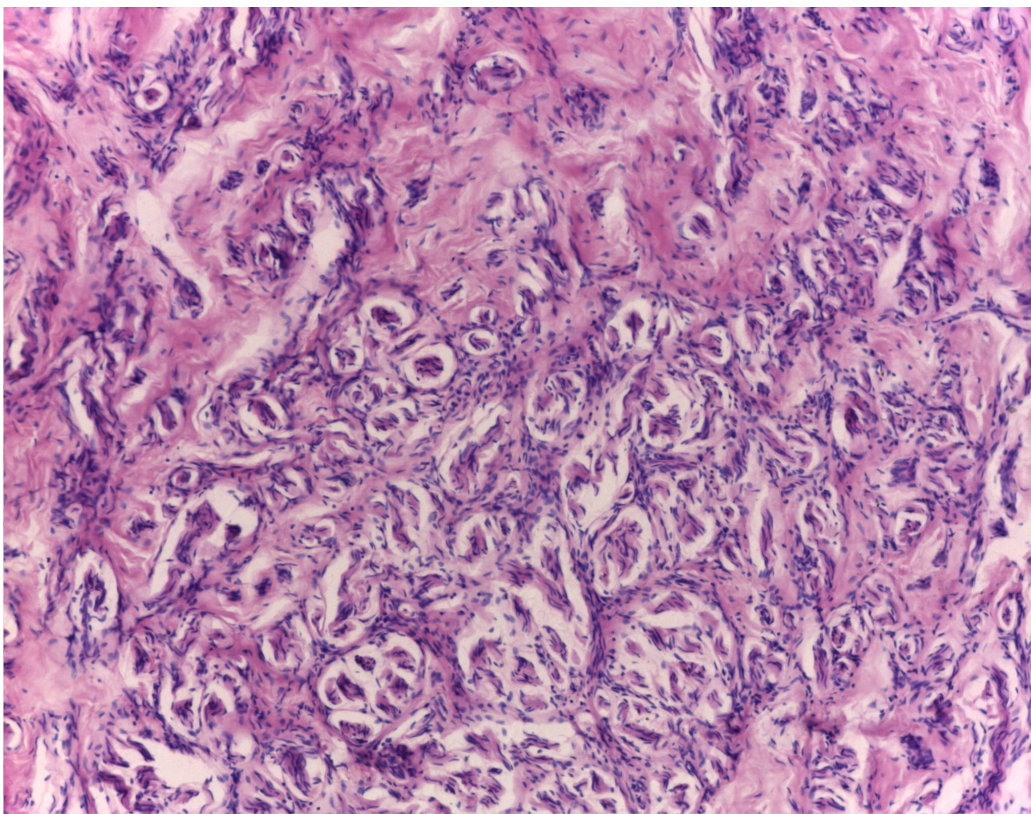
## Iatrogenic Lesions



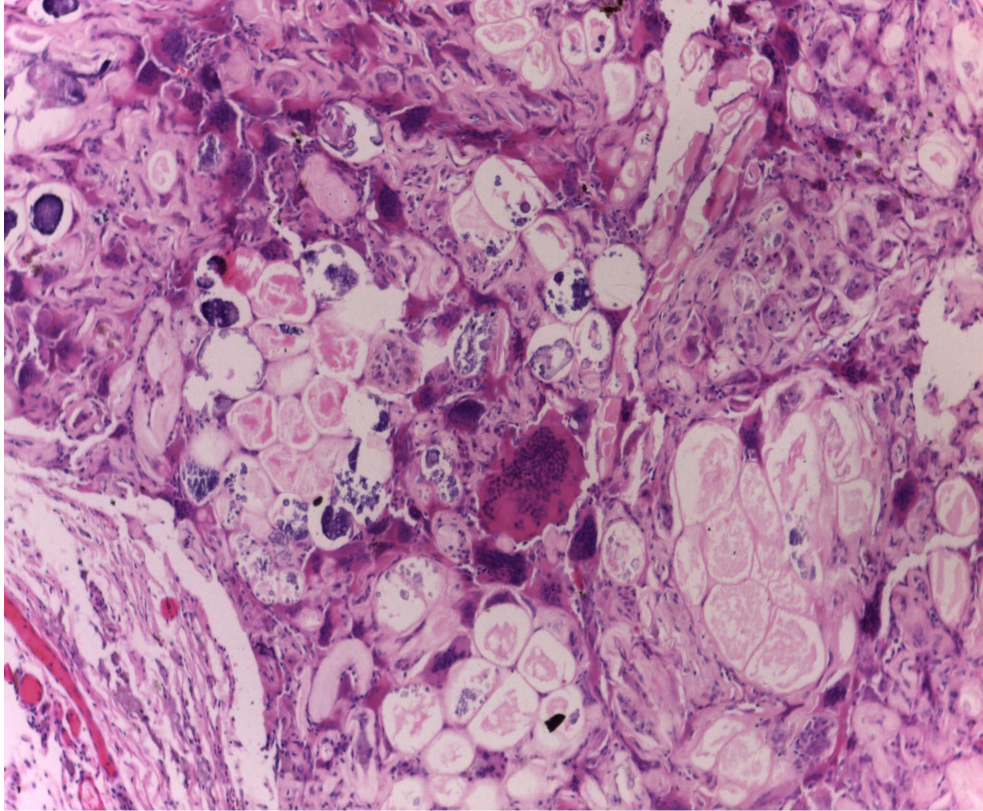
**P 9-1.** Palatal minor salivary glands, necrotizing sialometaplasia. **A** low power, and **B**, high power squamous metaplasia of ductal epithelium, a reaction to necrosis, may be misdiagnosed as squamous cell carcinoma.



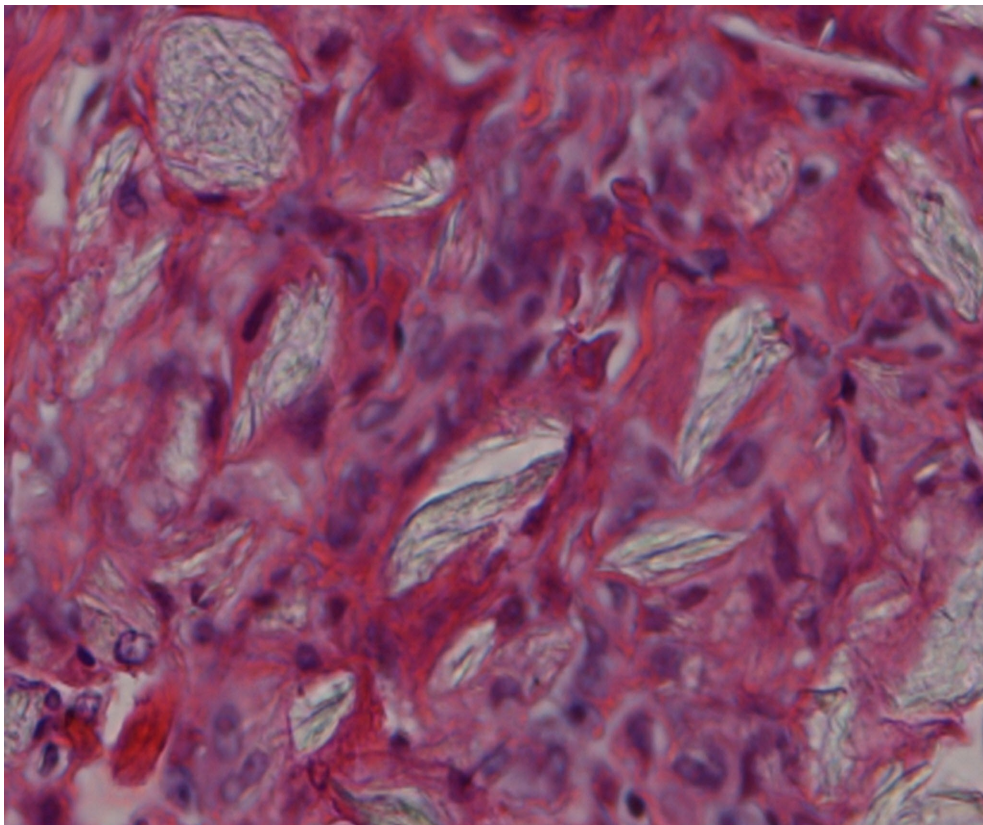
**P 9-2** Larynx, intubation granuloma. Showing granulation tissue with histiocytes.



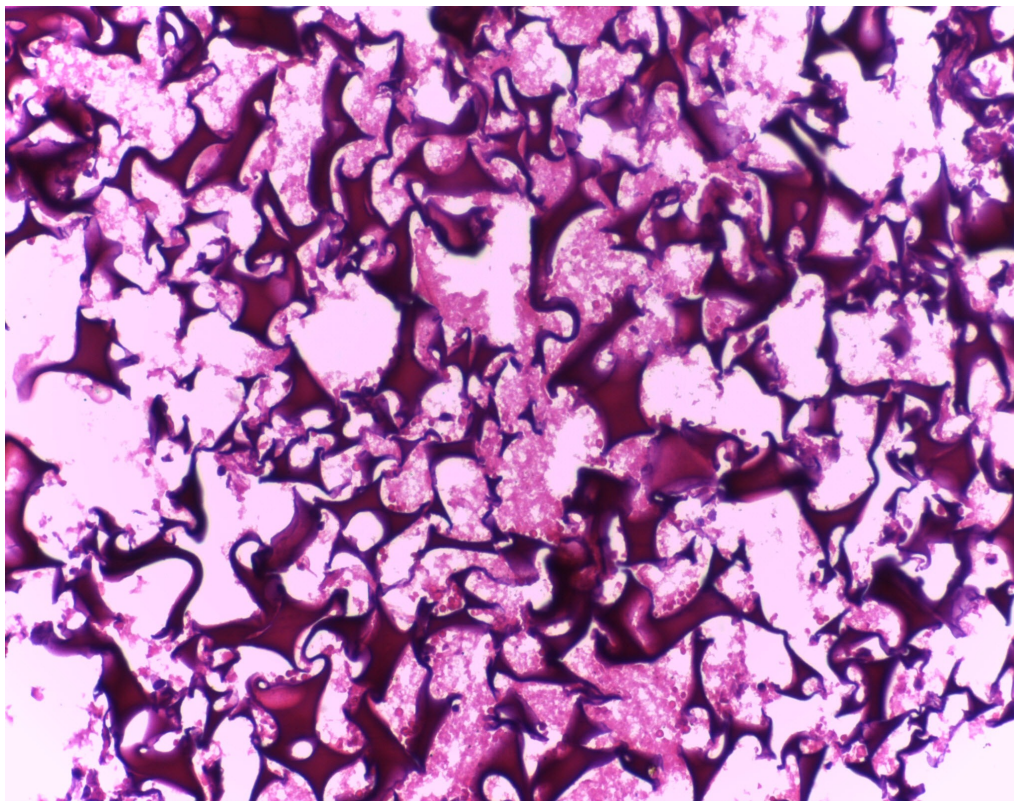
**P 9-3.** Post amputation traumatic neuroma. Degenerated nerve bundles within mature collagenous scar.



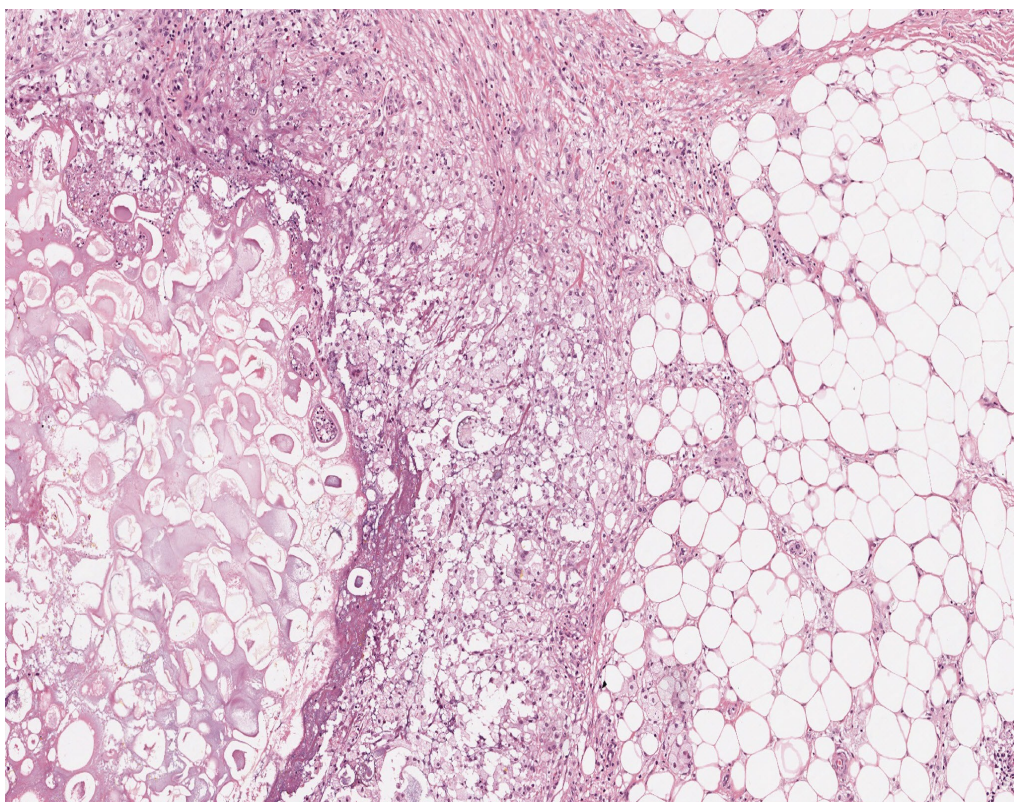
**P 9-4.** Dacron suture granuloma, post surgical.



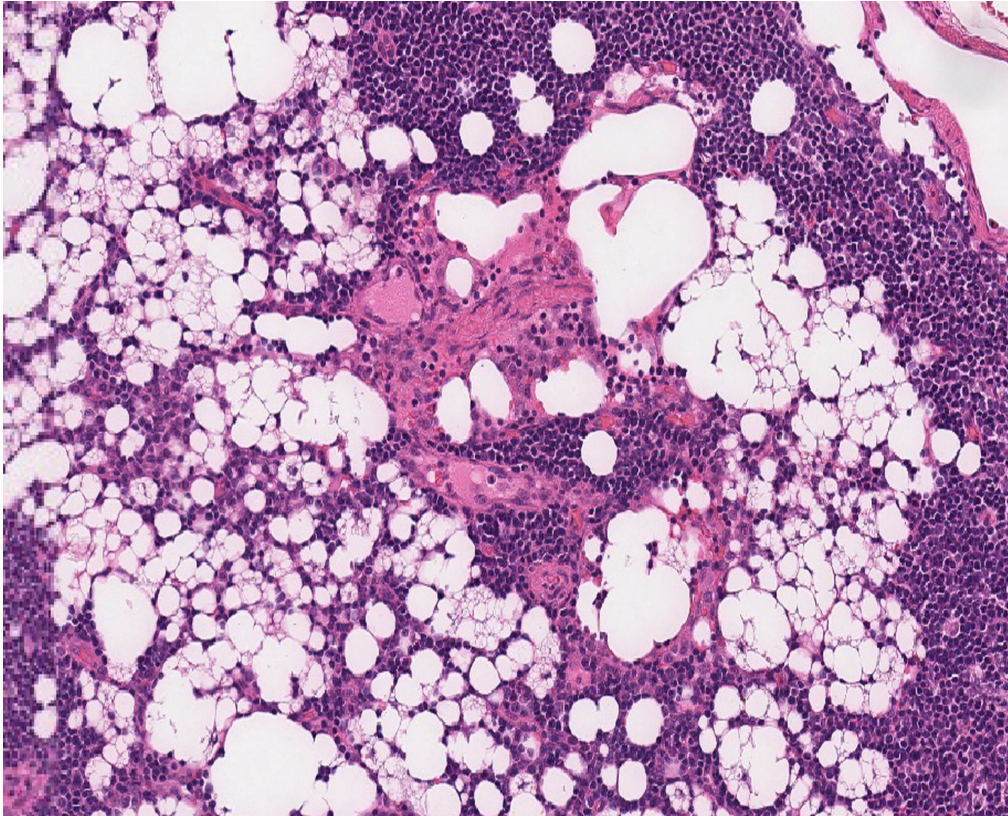
**P 9-5** Peritoneum, Talc granuloma.



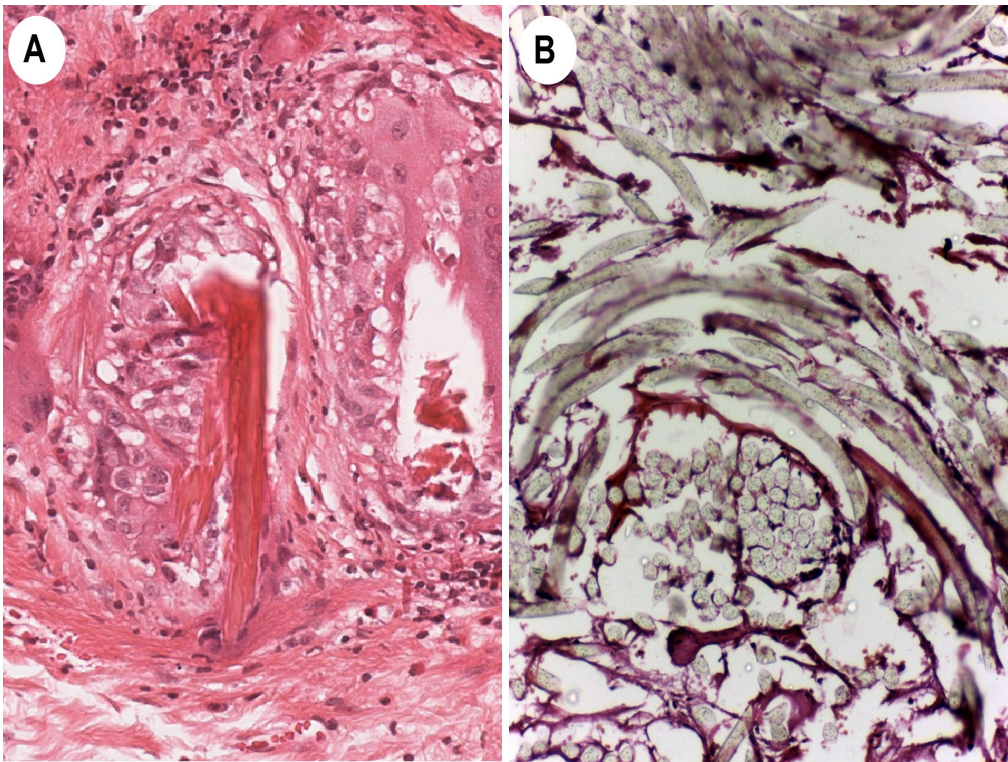
**P 9-6.** Hemostatic gel foam matrix, used in neurosurgery, should not be mistaken for bone forming lesions. Note absence of lacunea and lack of osteoblastic rimming.



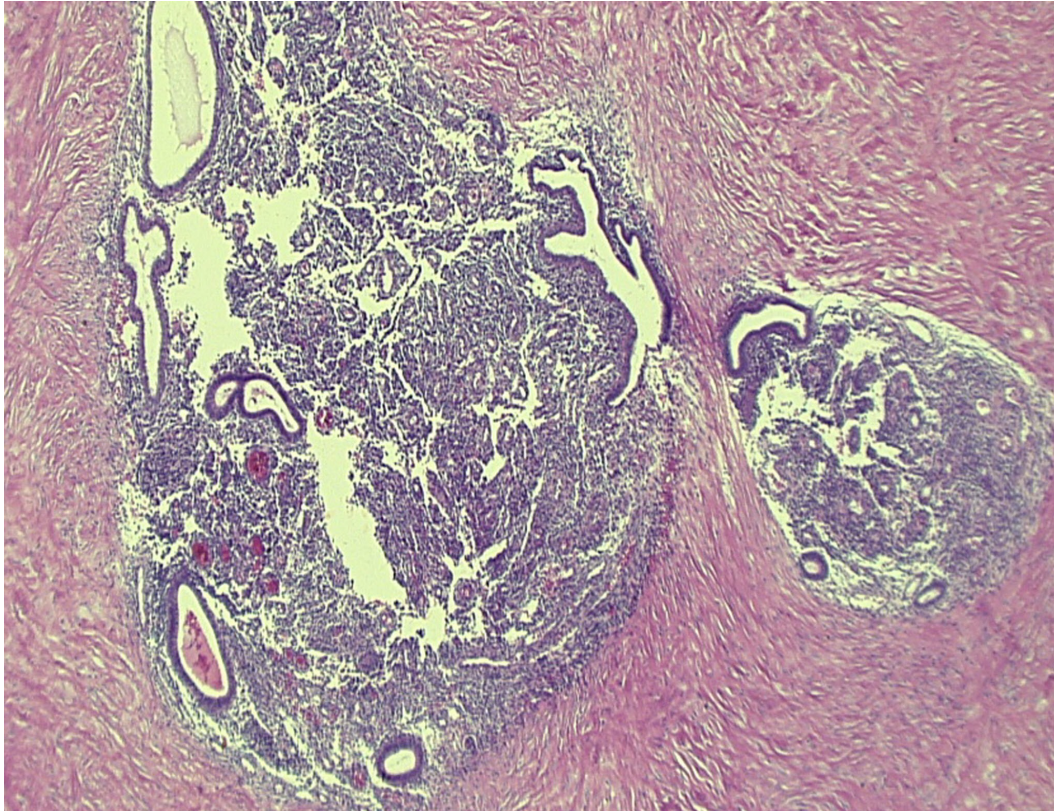
**P 9-7.** Lipid granuloma in peritoneum. A case of pancreatitis with enzymatic fat necrosis.



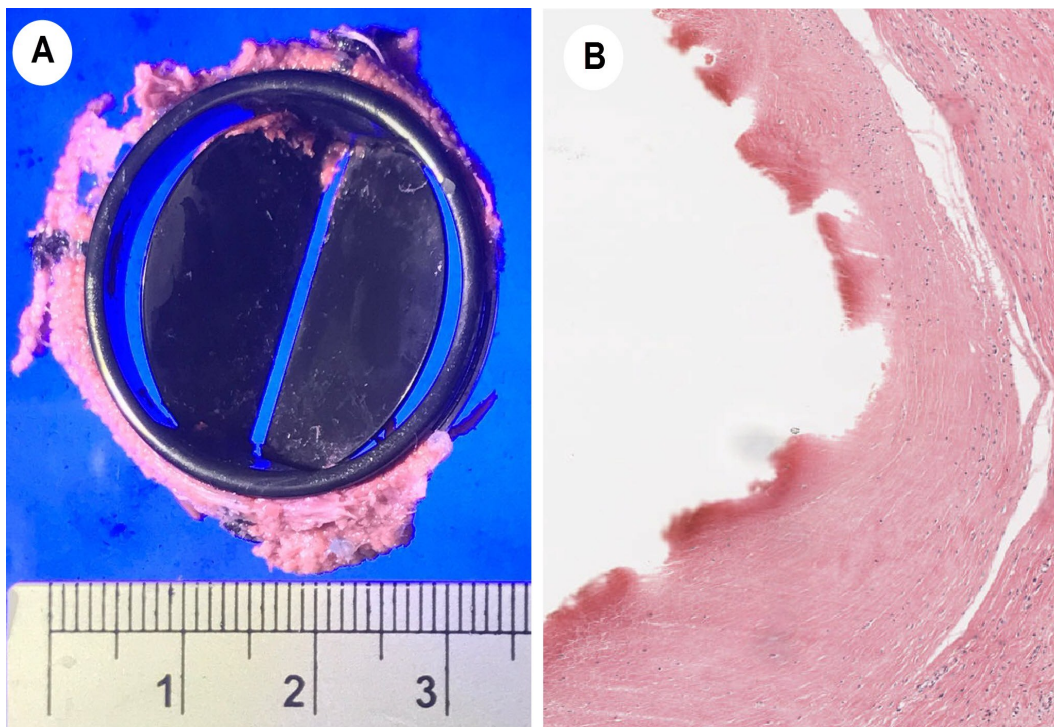
**P 9-8.** Silicone granuloma, axillary lymph node draining mamoplasty.



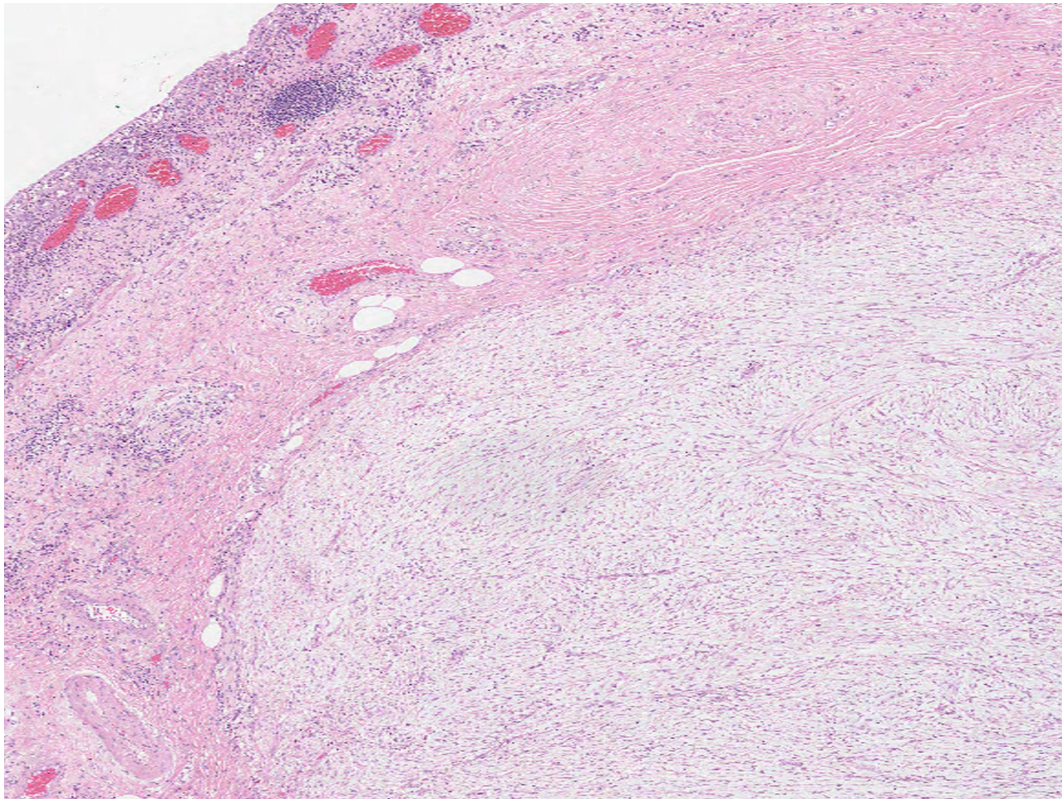
**P 9-9.** Post operative foreign fibers. **A** Cotton fibers, used to assure hemostasis, have a characteristic central core. **B** Dacron surgical suture material, arranged in bundles without central core.



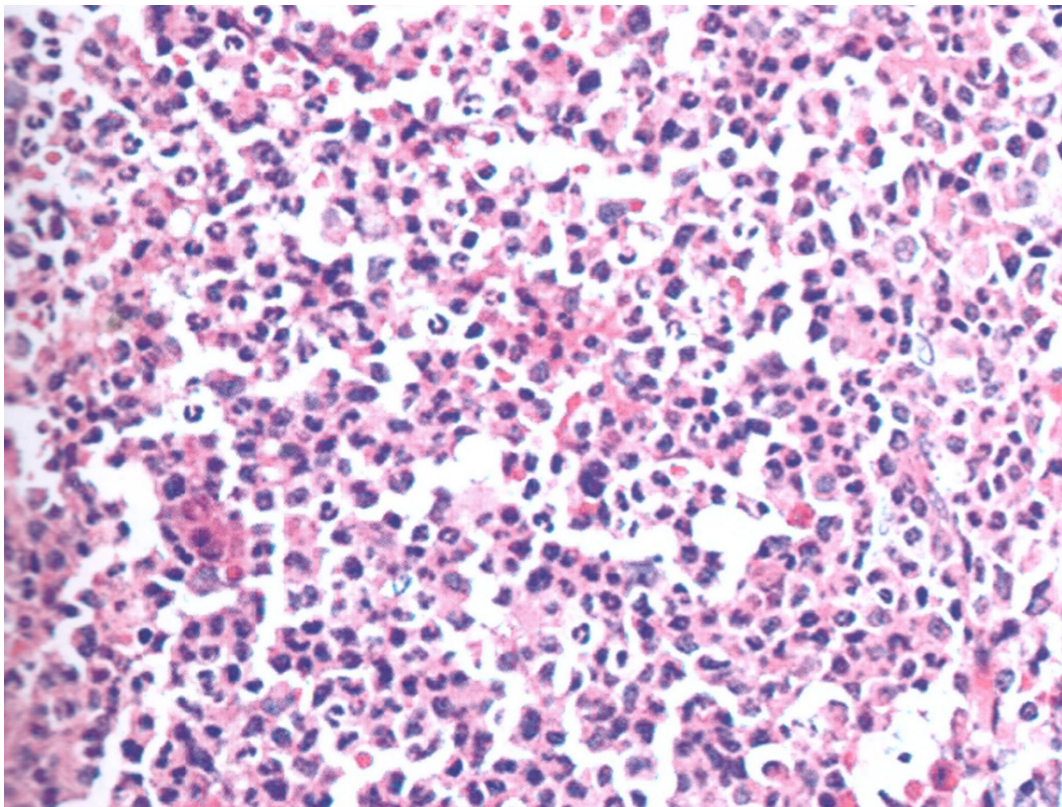
**P 9-10.** Endometriosis, anterior abdominal wall, post ceaserian section.



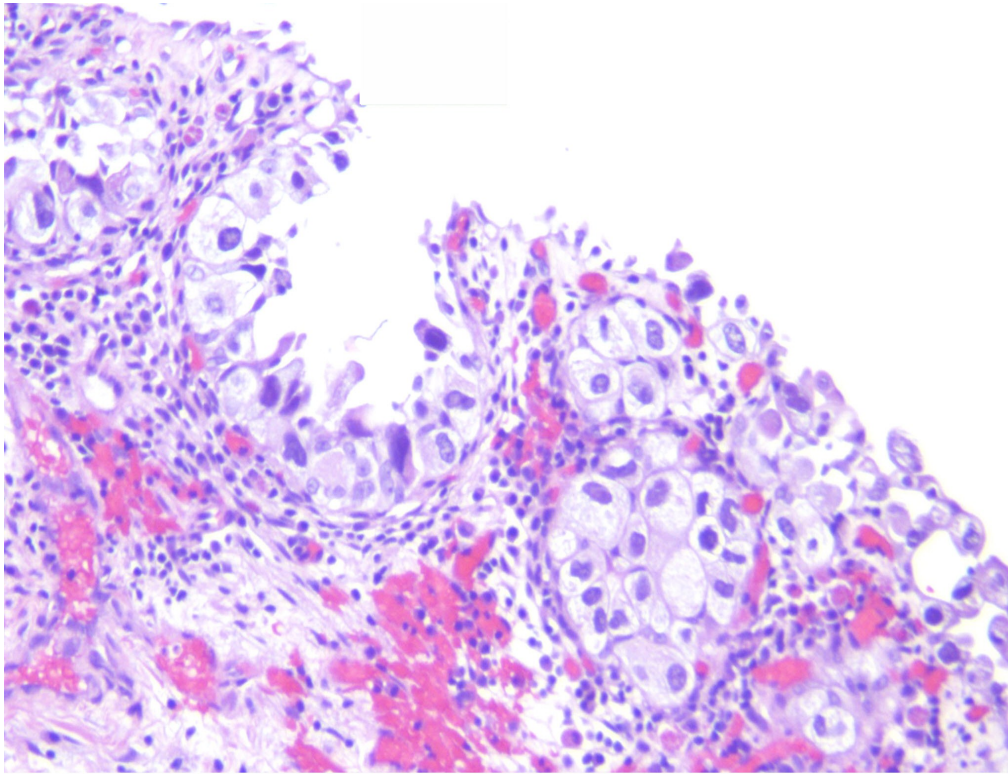
**P 9-11.** Artificial mitral valve replacement. **A** Gross photograph of vegetations attached to the circumference of the valve. **B** Histology of the vegetation. Valve thrombosis may be complicated by valve obstruction, hemorrhage, embolism or endocarditis (P 9-15).



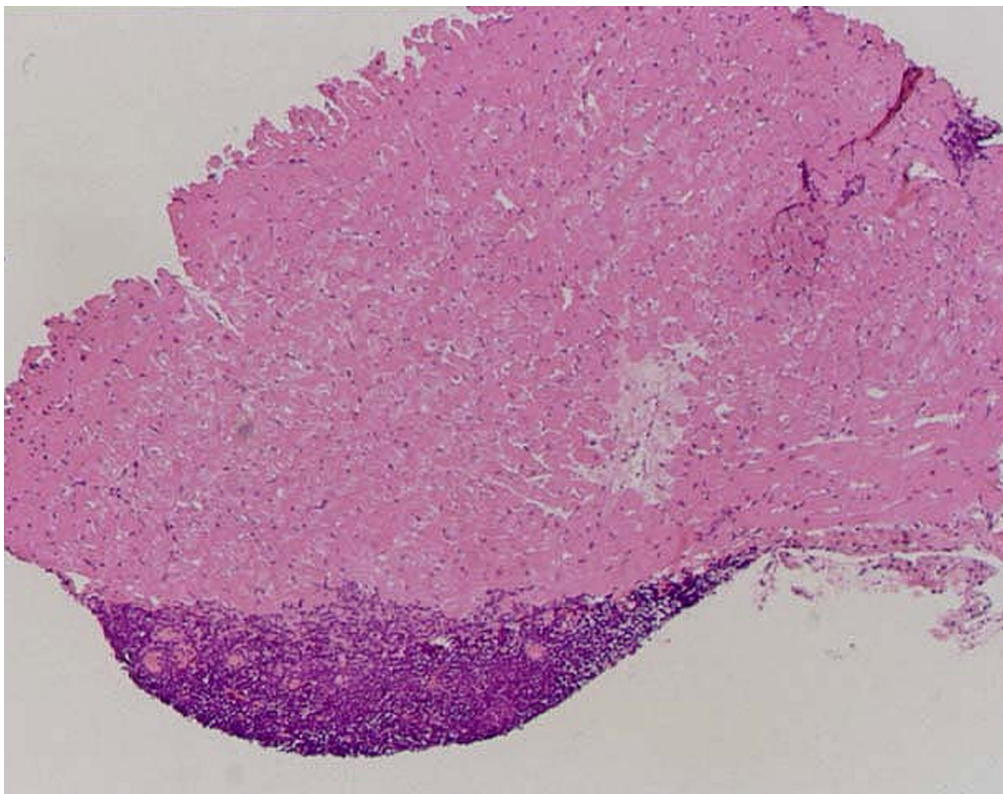
**P 9-12.** Urinary bladder, post-instrumentation pseudotumor. The fibroblastic proliferation may be mistaken for a sarcoma, however history of the procedure will help to avoid this pitfall.



**P 9-13.** Stimulated hematopoietic cells, bone marrow. Mononuclear hematopoietic hyperplasia in recovery post therapeutic bone marrow ablation. May be misdiagnosed as acute leukemia.



**P 9-14. Urothelial dysplasia post cyclophosphamide.**

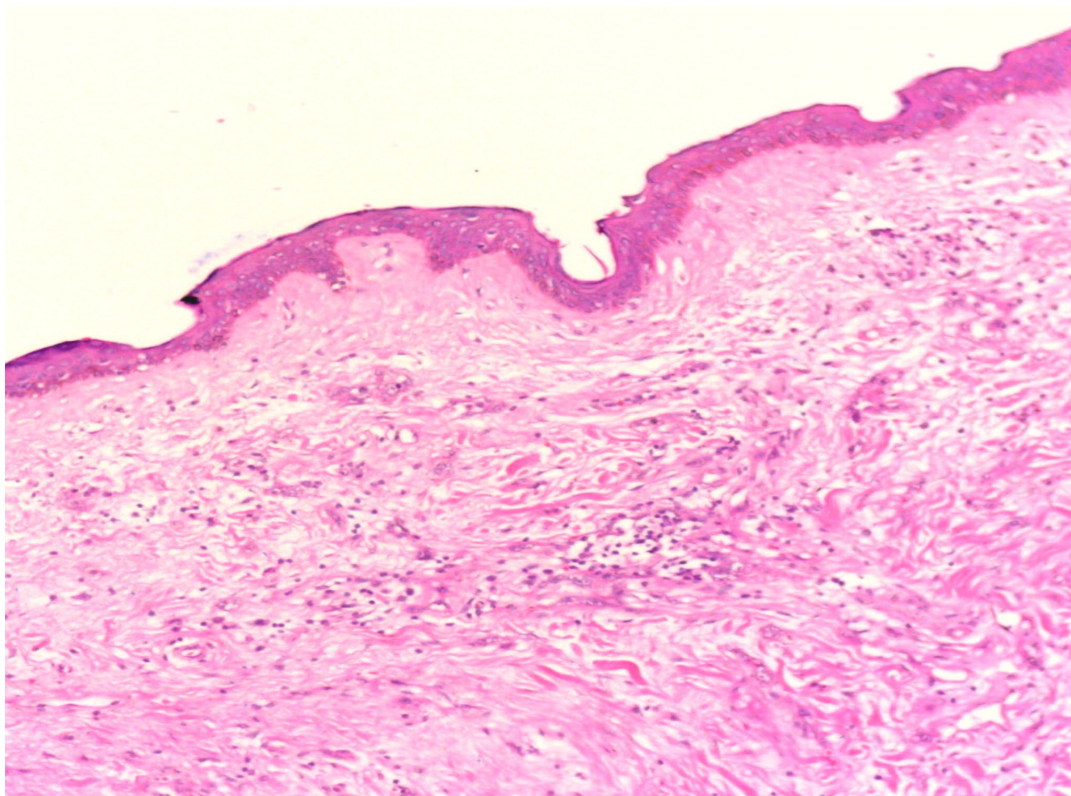


**P 9- 15. Quilty lesion of endomyocardium. Endocardial inflammatory reaction rich in of lymphocytes with macrophages and plasma cells in the endocardium of transplanted hearts.**

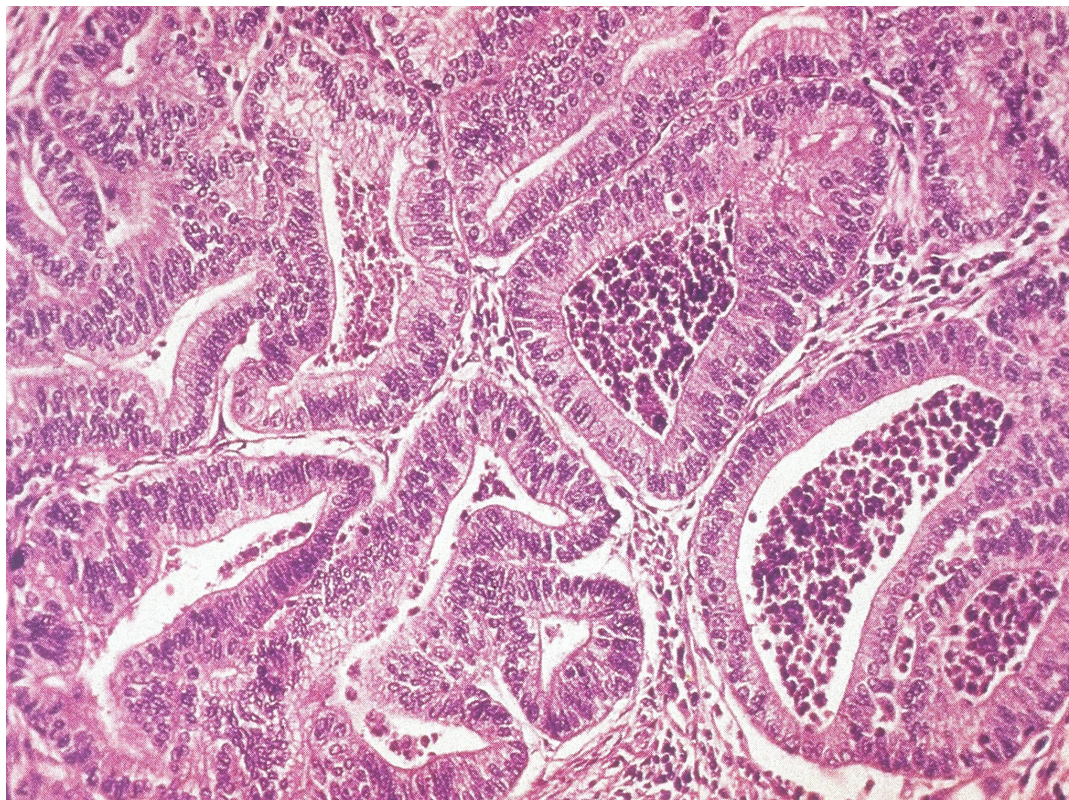




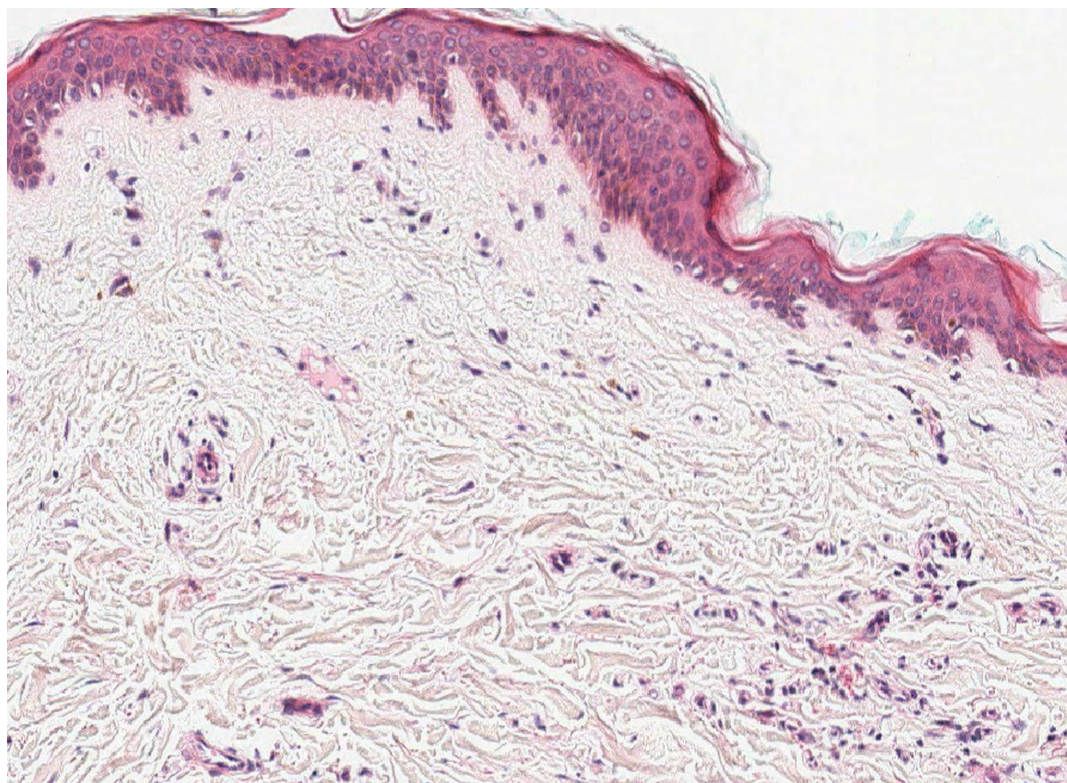
**P 9-16** Stewart-Treves syndrome. Lymphangiosarcoma of right arm following mastectomy.



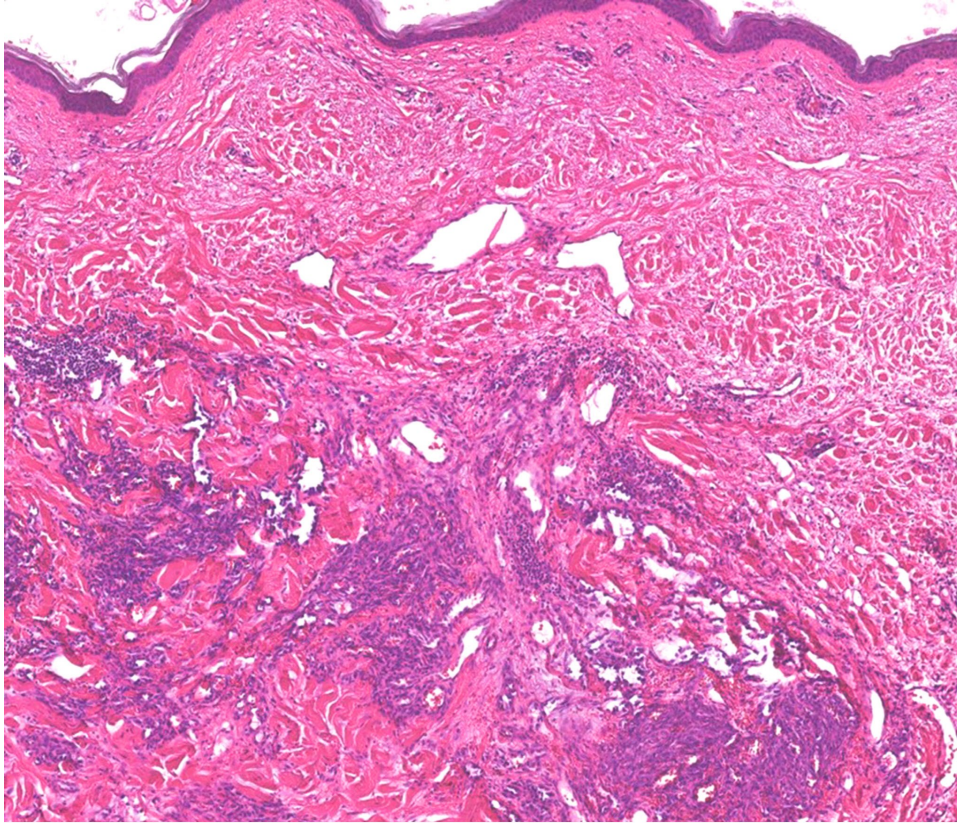
**P 9-17.** Stewart-Treves syndrome, characterized by crowded small capillaries, which may be missed by the observer.



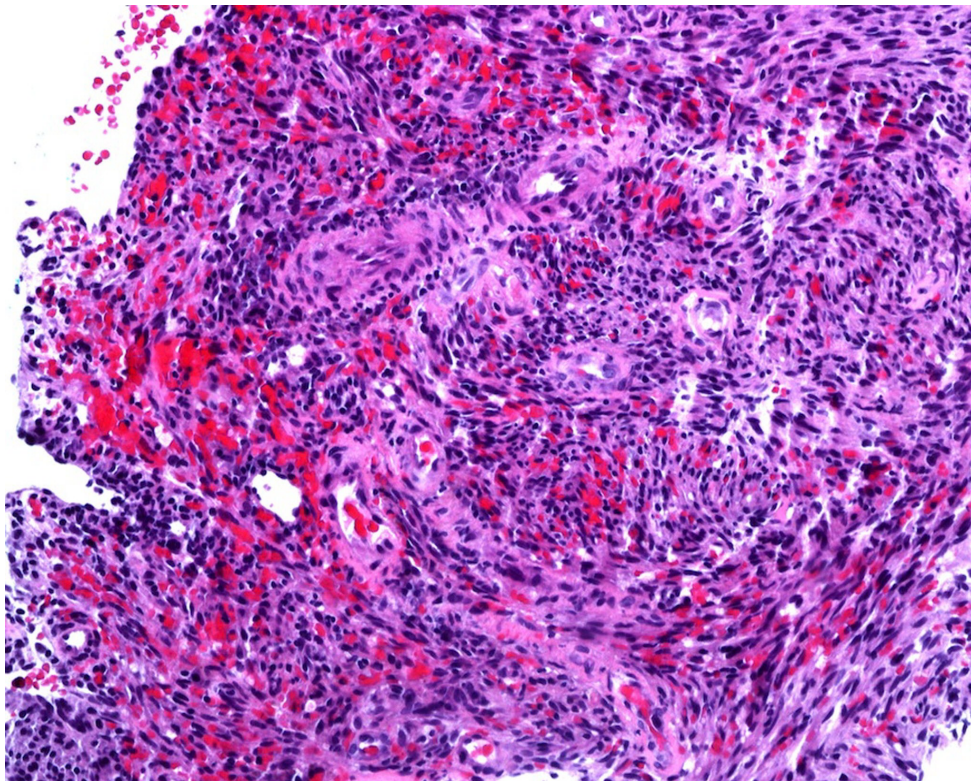
**P 9-18.** Post tamoxifen endometrial carcinoma. Back to back crowded glands with no intervening stroma.



**P 9-19.** Post-radiation early hemangioendothelioma, breast.



**P 9-20.** Post-radiation, late aggressive hemangioendothelioma, breast



**P 9-21.** Kaposi sarcoma in a lymph node, post renal transplant. Note the vascular spindle cell lesion (positive for CD34). The lesion is related to prolonged immunosuppression, due to