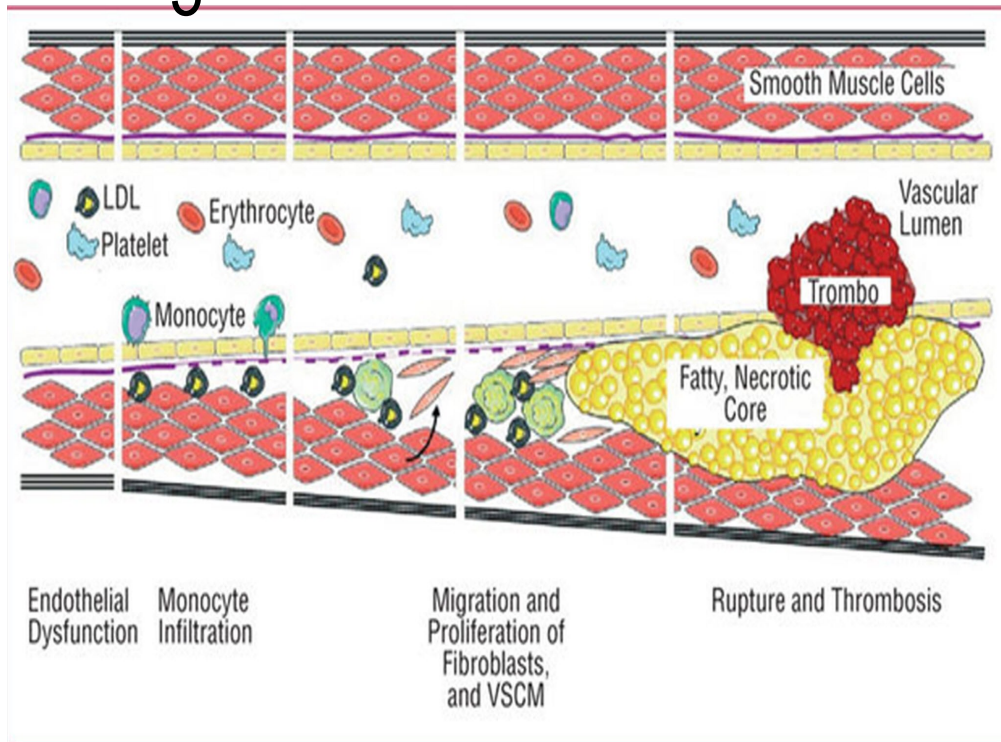


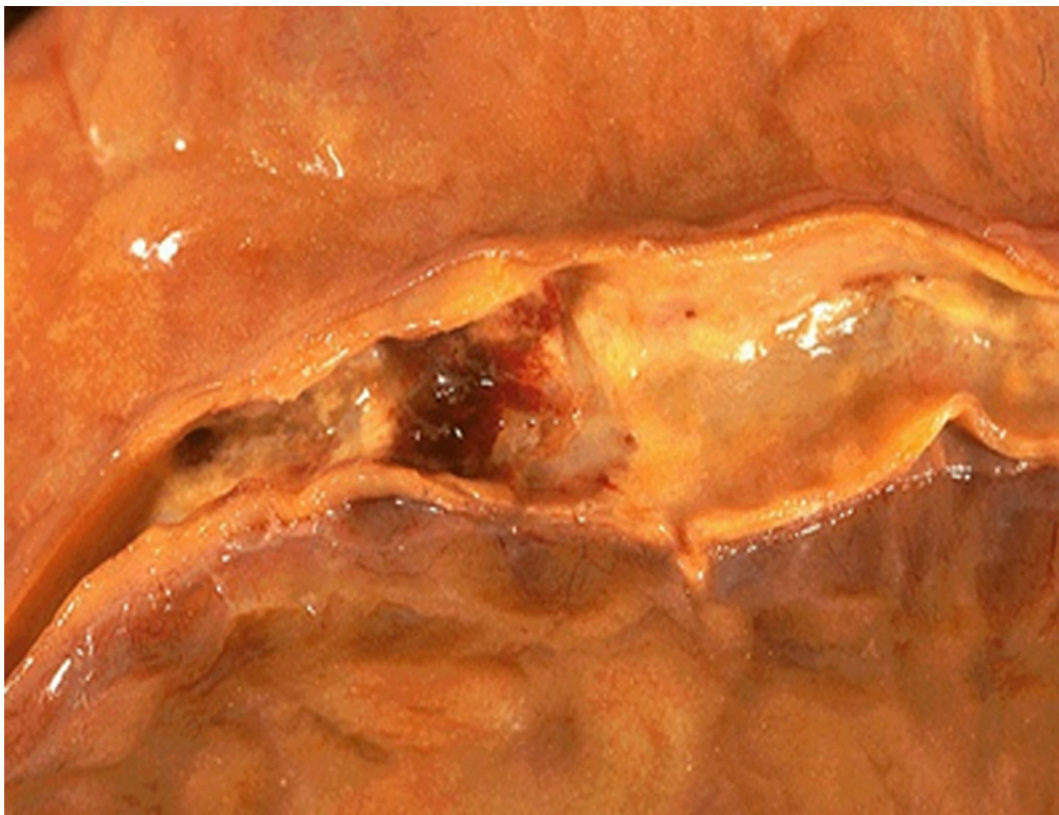
Section

5

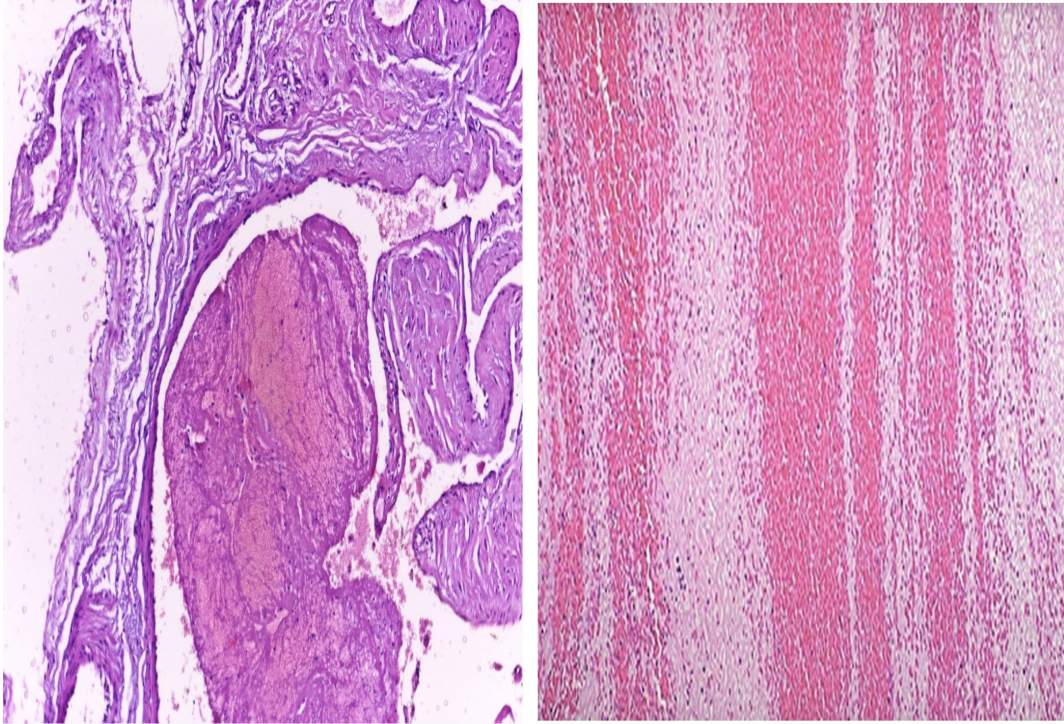
Vascular Disease



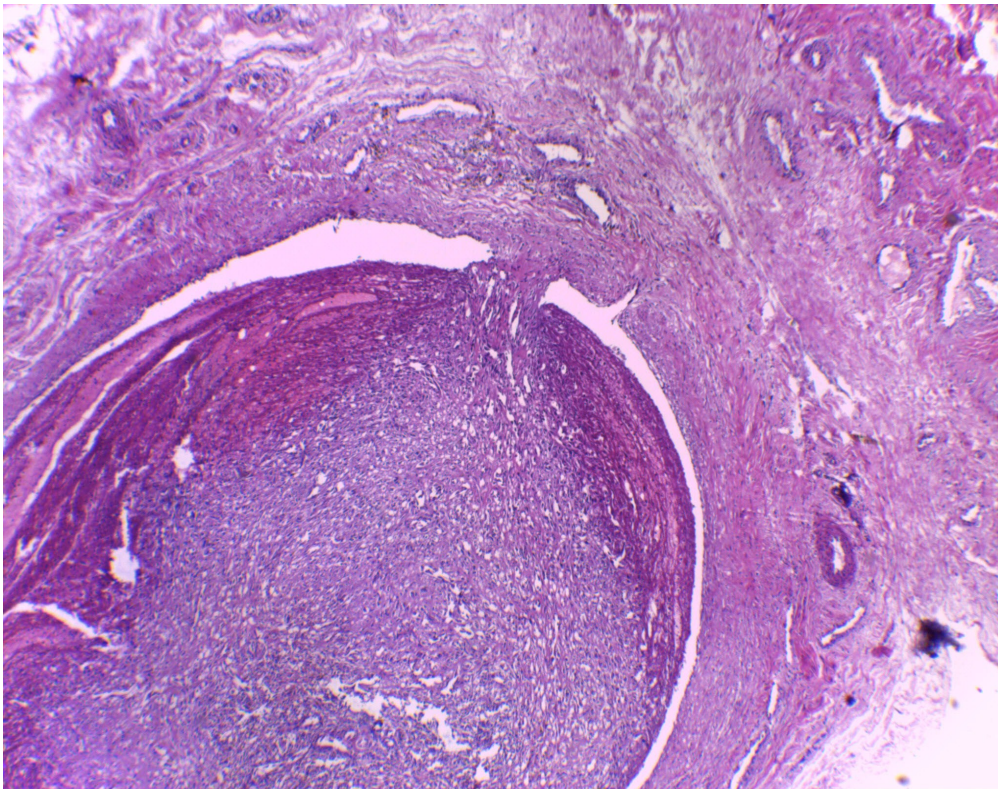
P 8-1 Steps in the development of atherosclerosis.



P 8-2 Coronary artery. Gross appearance of an atherosclerotic plaques with hemorrhage.



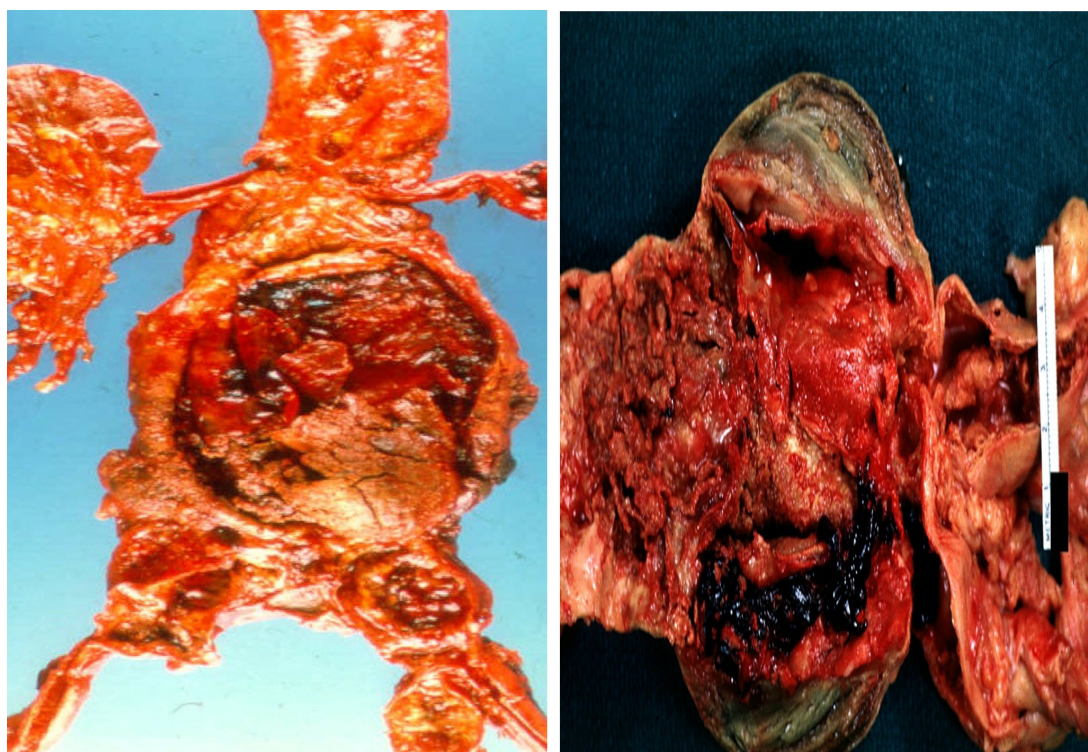
P 8-3 Recent thrombus, lines of Zahn. Characterized by alternating pale pink bands of platelets with fibrin and red bands of RBC's.



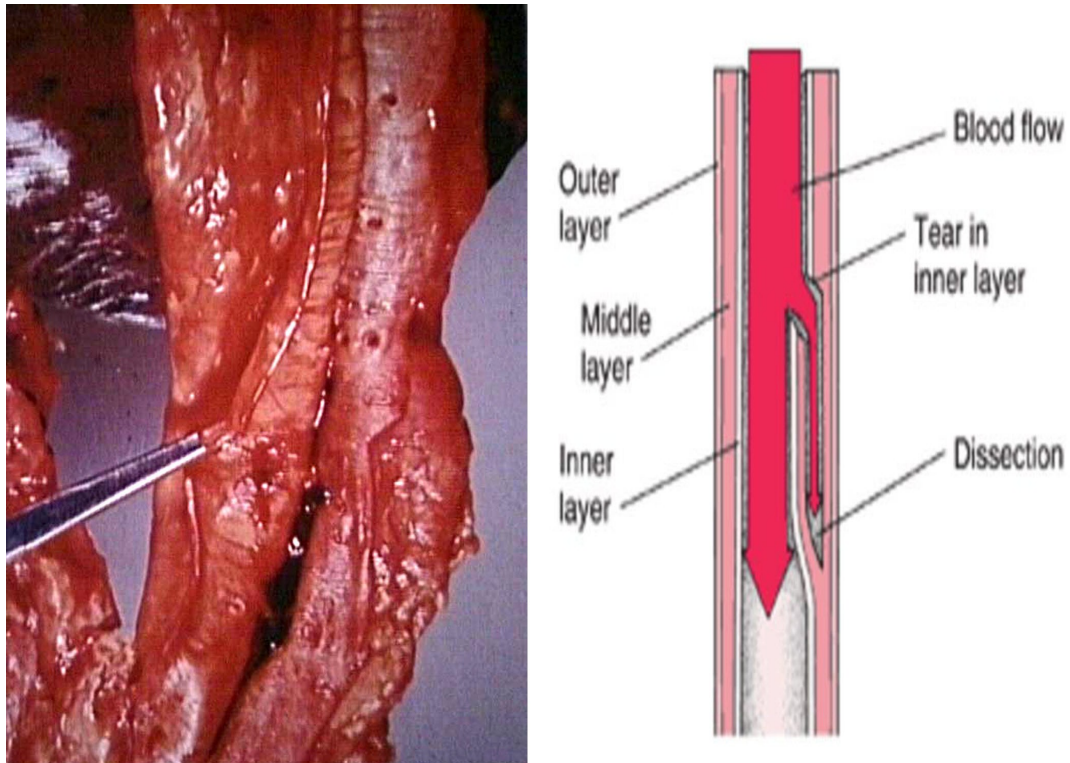
P 8-4 Organized thrombus. The thrombus is recanalized by capillaries streaming from the wall of blood vessel.



P 8-5 Angiogram of a renal artery. Showing the string of beads pattern in fibromuscular dysplasia.



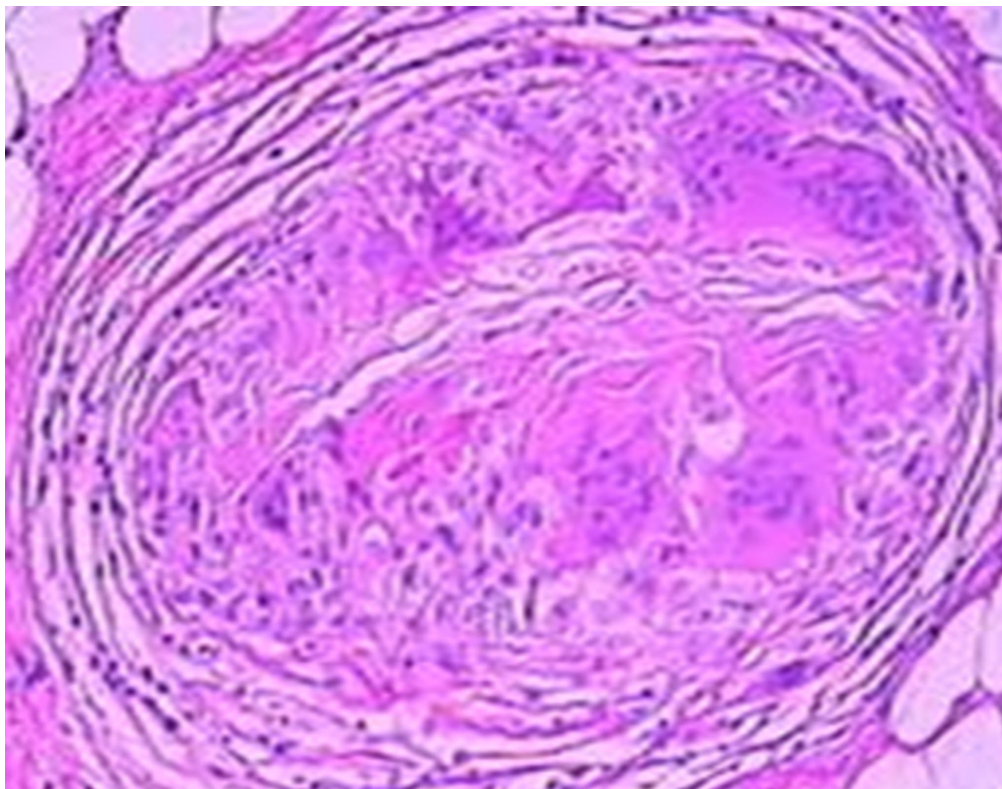
P 8-6 Atherosclerosis. Aortic aneurysm. The lesions are yellowish, ulcerated and associated with multiple thrombi.



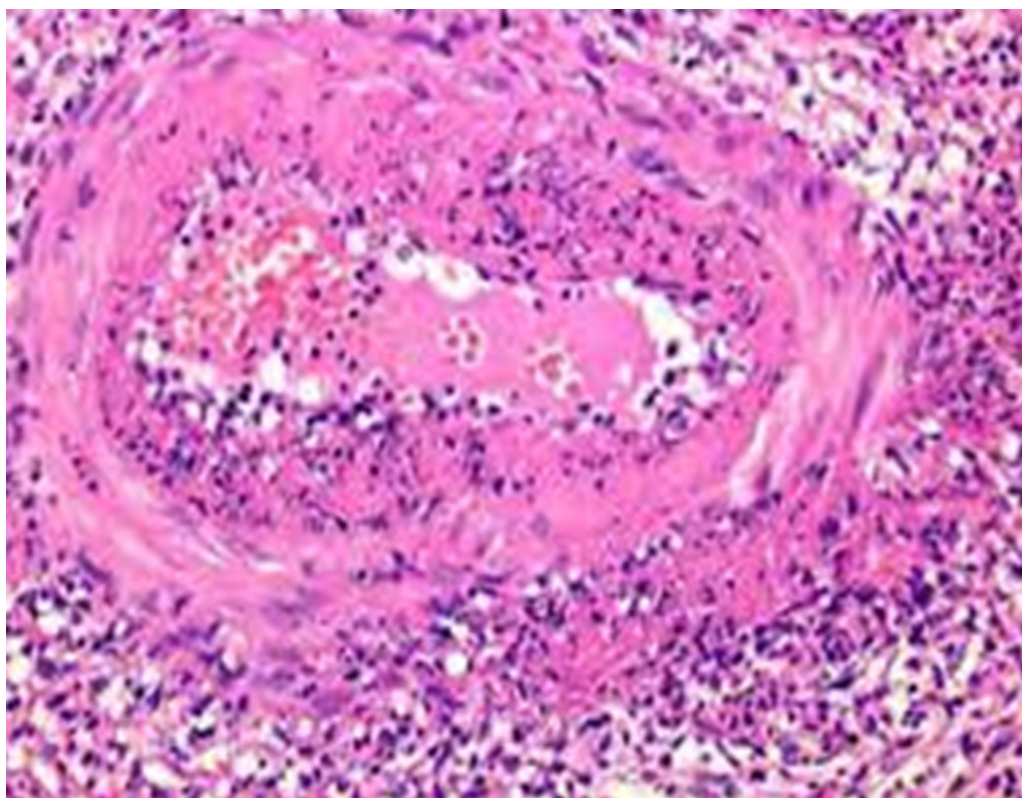
P 8-7 Dissecting aneurysm. **A.** Gross appearance. **B.** Diagrammatic representation. Blood passes through a tear in intima to the wall of blood vessel.



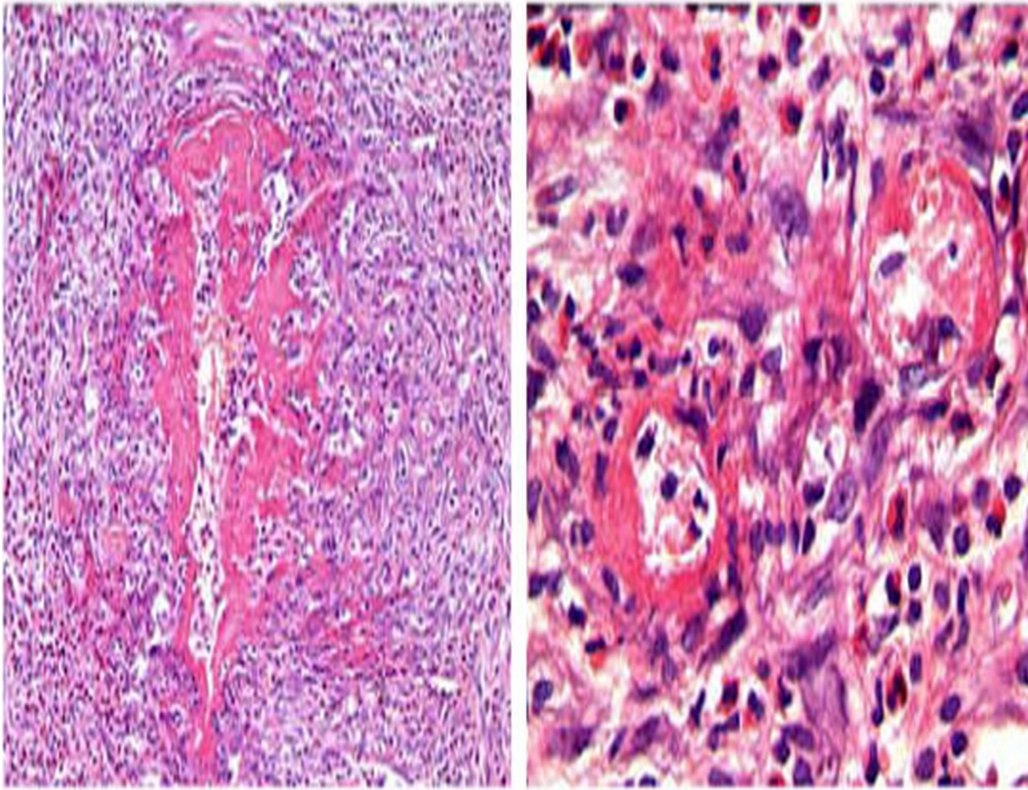
P 8-8 Aortogram with Takayasu's arteritis (pulseless syndrome). There is thickening of the wall of aortic arch with vascular occlusion of its main branches.



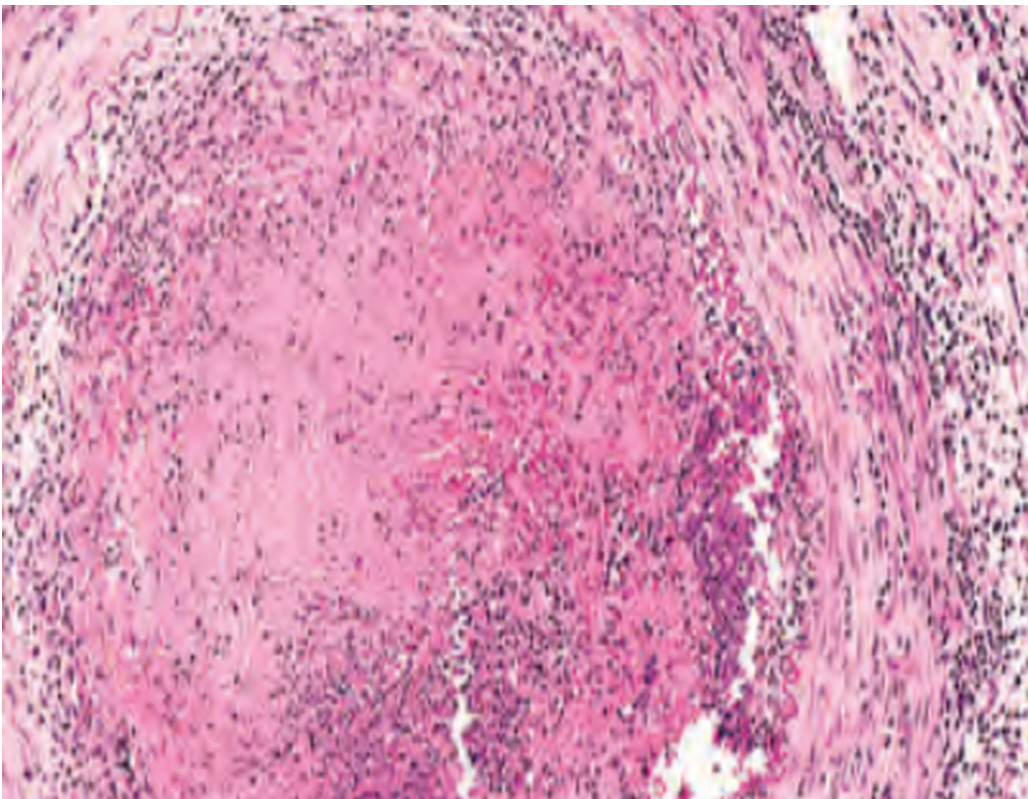
P 8-9 Giant cell arteritis showing granulomatous inflammation of the media, rich in giant cells with fibrosis and vascular occlusion.



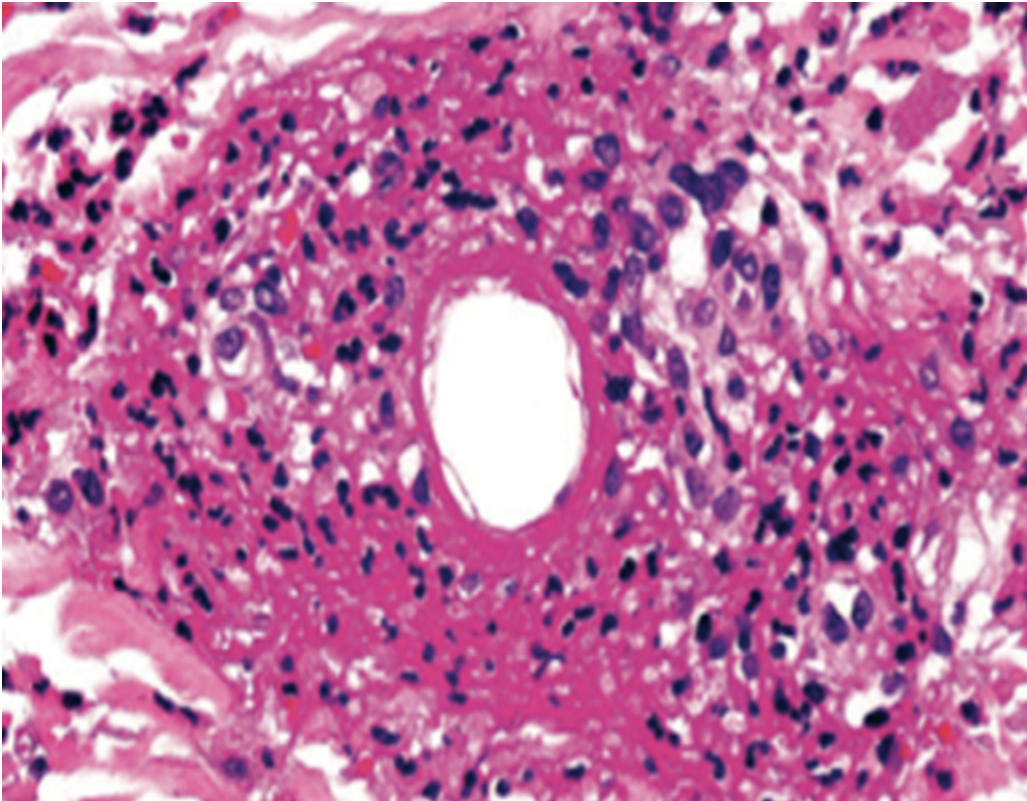
P 8-10 Polyarteritis nodosa showing fibrinoid necrosis and transmural inflammation of the arterial wall.



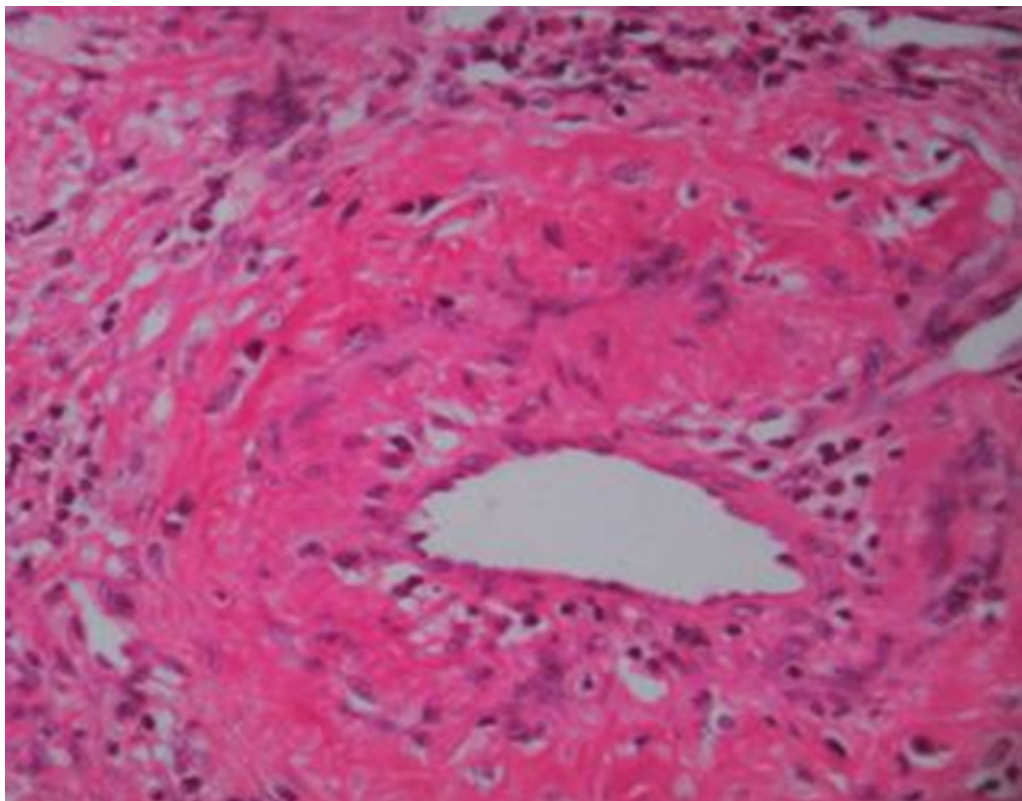
P 8-11 kawasaki disease. Necrotizing microvasculitis with mixed granulolymphomonocytic infiltrate, which mainly affect arteriole-capillary area.



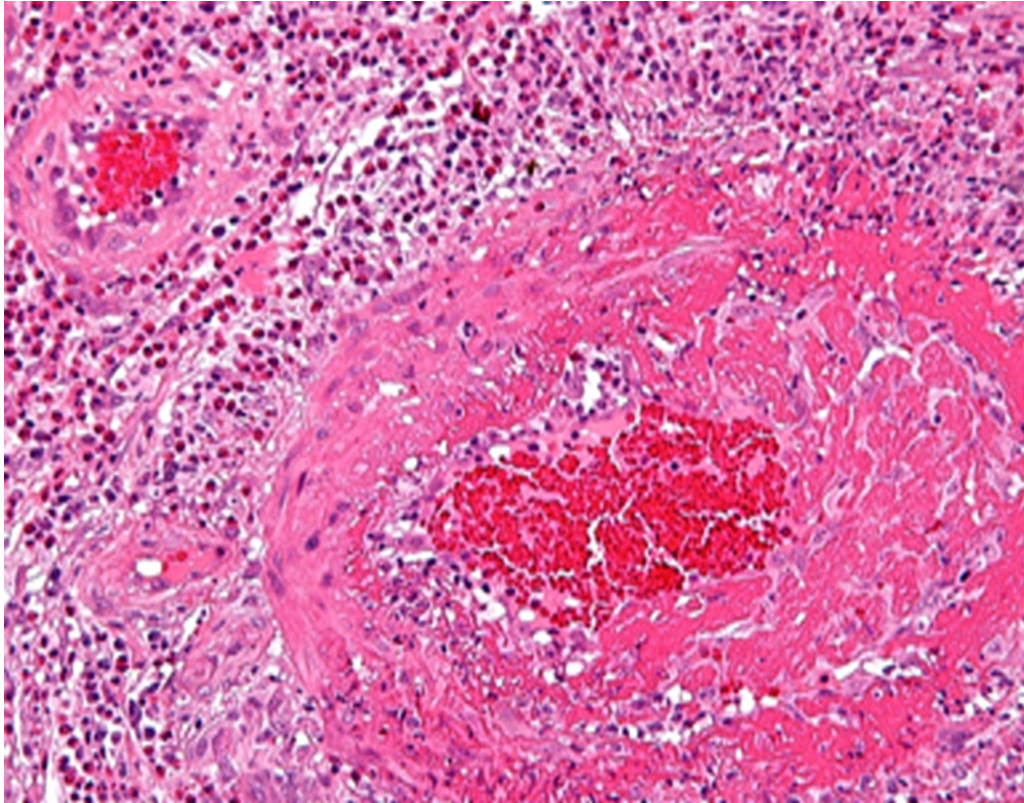
P 8-12 Leg vessel, thromboangitis obliterans (Buerger disease). The vessel wall is infiltrated by neutrophils and the lumen is occluded by a thrombus.



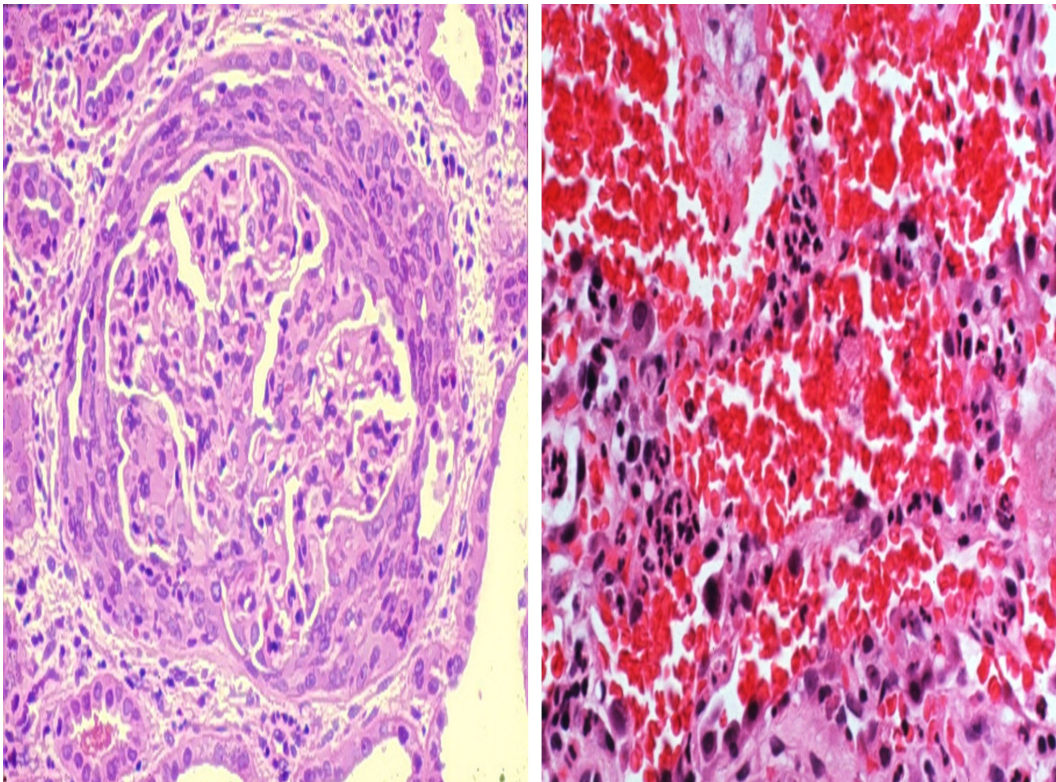
P 8-13 Leukocytoclastic vasculitis showing fibrinoid necrosis and neutrophilic infiltrate in the vessel wall. Many of the neutrophils are fragmented.



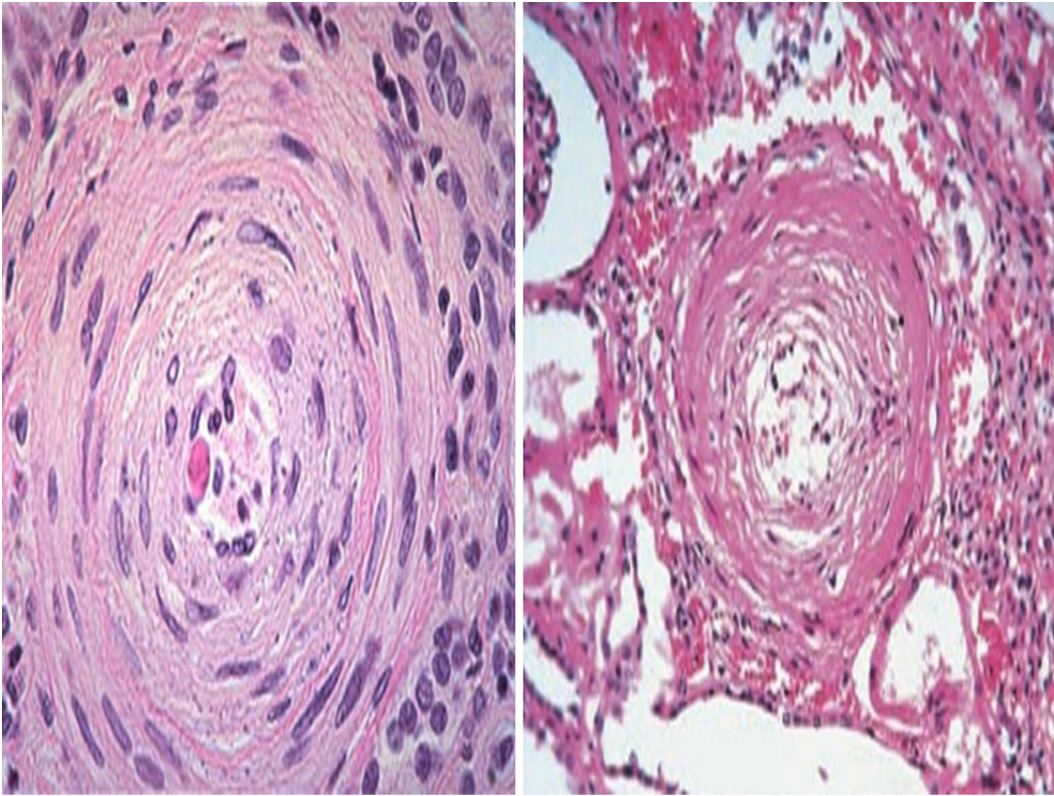
P 8-14 Wegener's granulomatosis. There are chronic inflammatory cells and giant cells in the arterial wall, a reaction to focal necrosis.



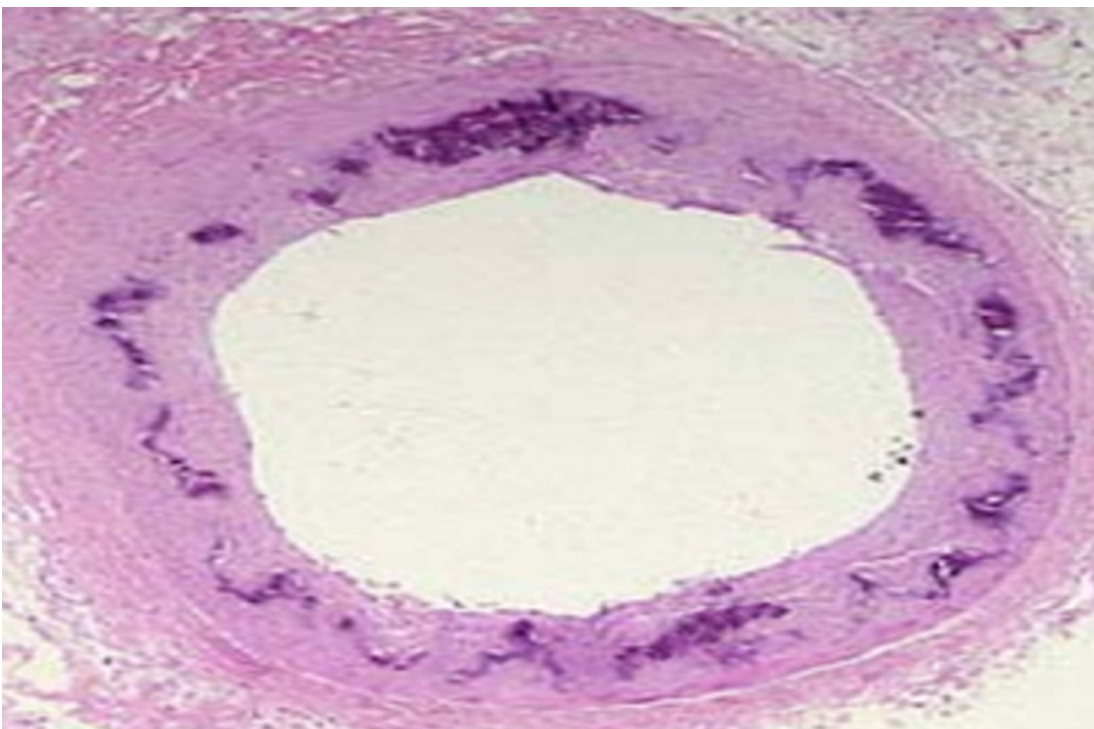
P 8-15 Churg-Strauss syndrome with fibrinoid necrosis of the vessel wall and eosinophilic infiltrates.



P 8-16 Goodpasture syndrome. **A.** Kidney, crescent formation with glomerulonephritis. **B.** lung, acute capillaritis with pulmonary hemorrhage.



P 8-17 Renal arteriole showing an onion skin appearance typical of hyperplastic arteriosclerosis, a reaction to systemic hypertension.



P 8-18 Calcification of the media in Monckeberg calcific sclerosis