

Tumors of Base of skull

Anatomico-pathologic Profile

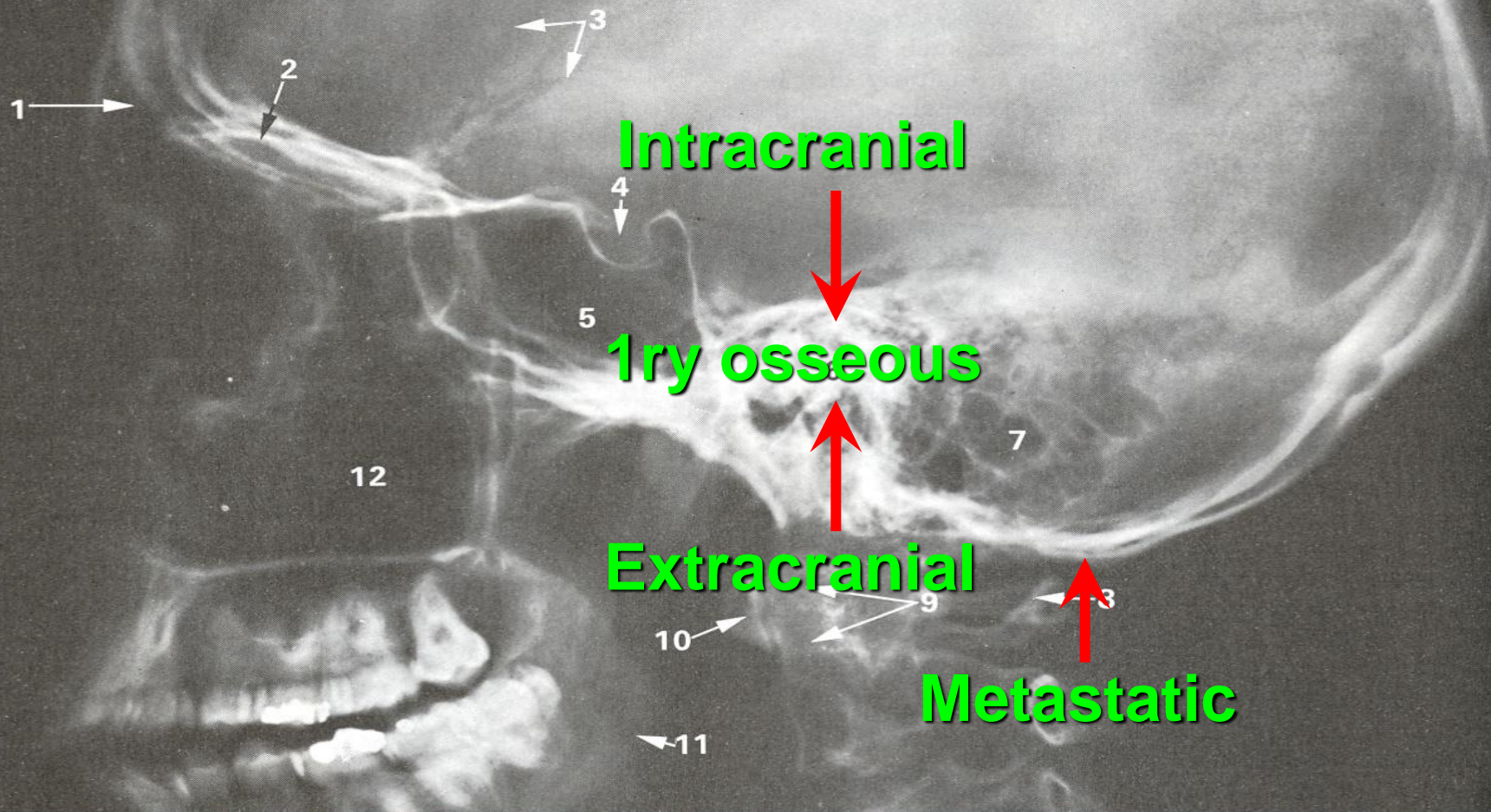
M.Nabil El Bolkainy

Department of Pathology

NCI, Cairo University

2009

Classification



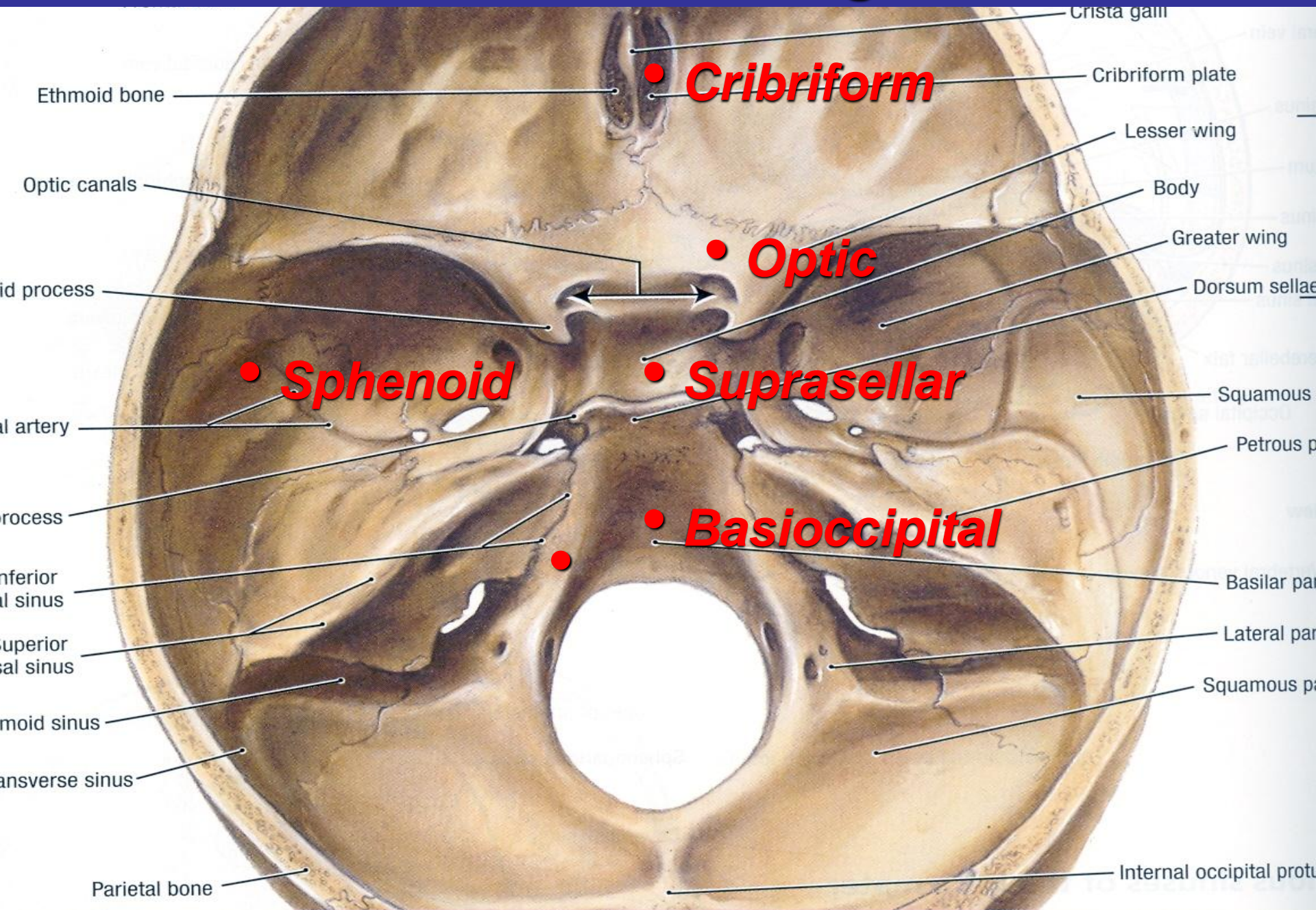
Primary Osseous Tumors

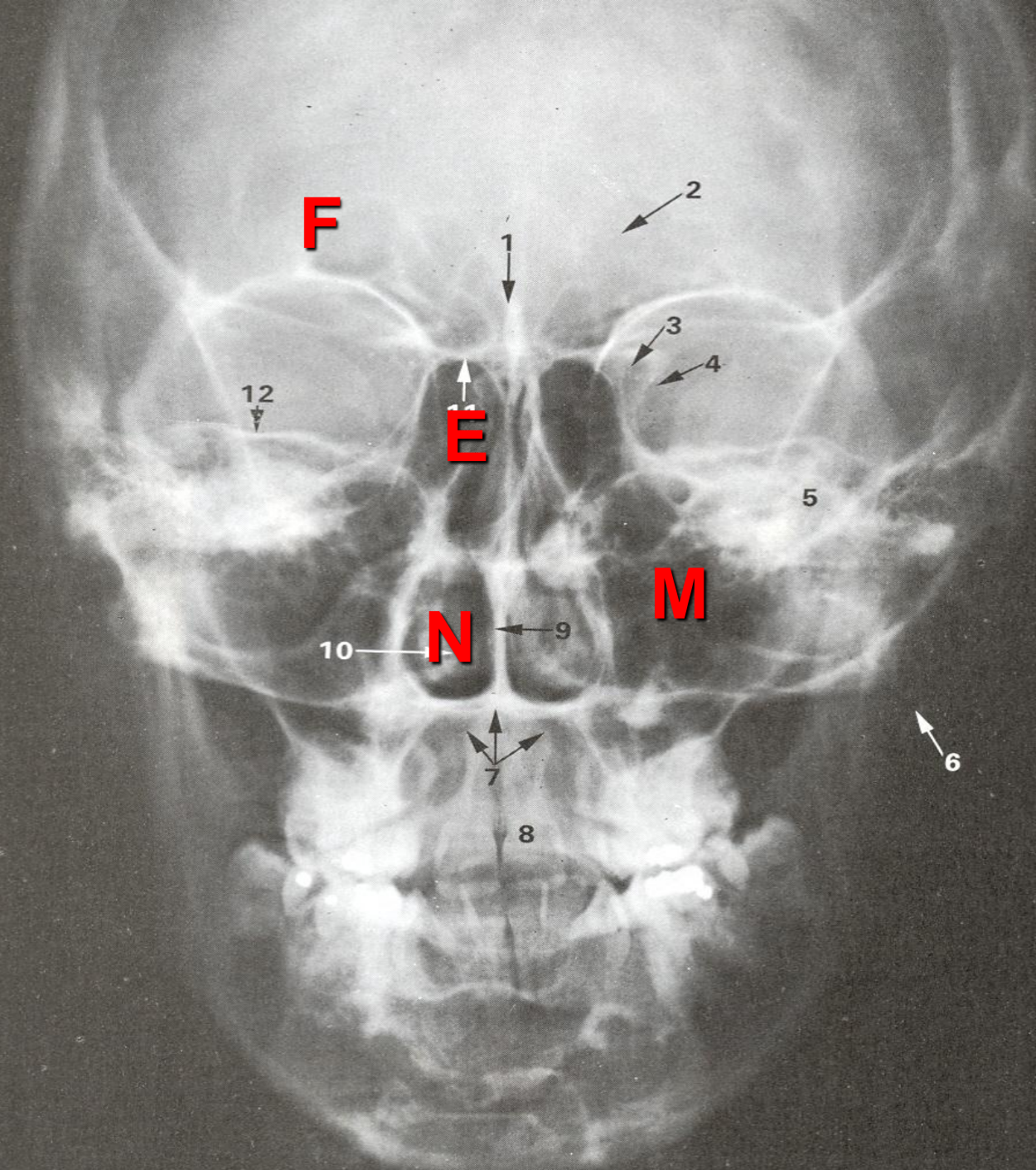
- 1. Hyperplastic:** *Giant cell granuma, Langerhans histiocytosis, aneurysmal bone cyst.*
- 2. Borderline:** *Ossifing fibroma, myxoma and ameloblastoma.*
- 3. Malignant:** *Chondrosarcoma, myeloma, osteosarcoma and chordoma.*

Intracranial Tumors Invading Bone

- 1. Olfactory neuroblastoma**
- 2. Pituitary tumors & craniopharyngeoma**
- 3. Acoustic neuroma**
- 4. Meningioma**

Sites of Basal Meningiomas





F

E

N

M

2

1

3

4

12

5

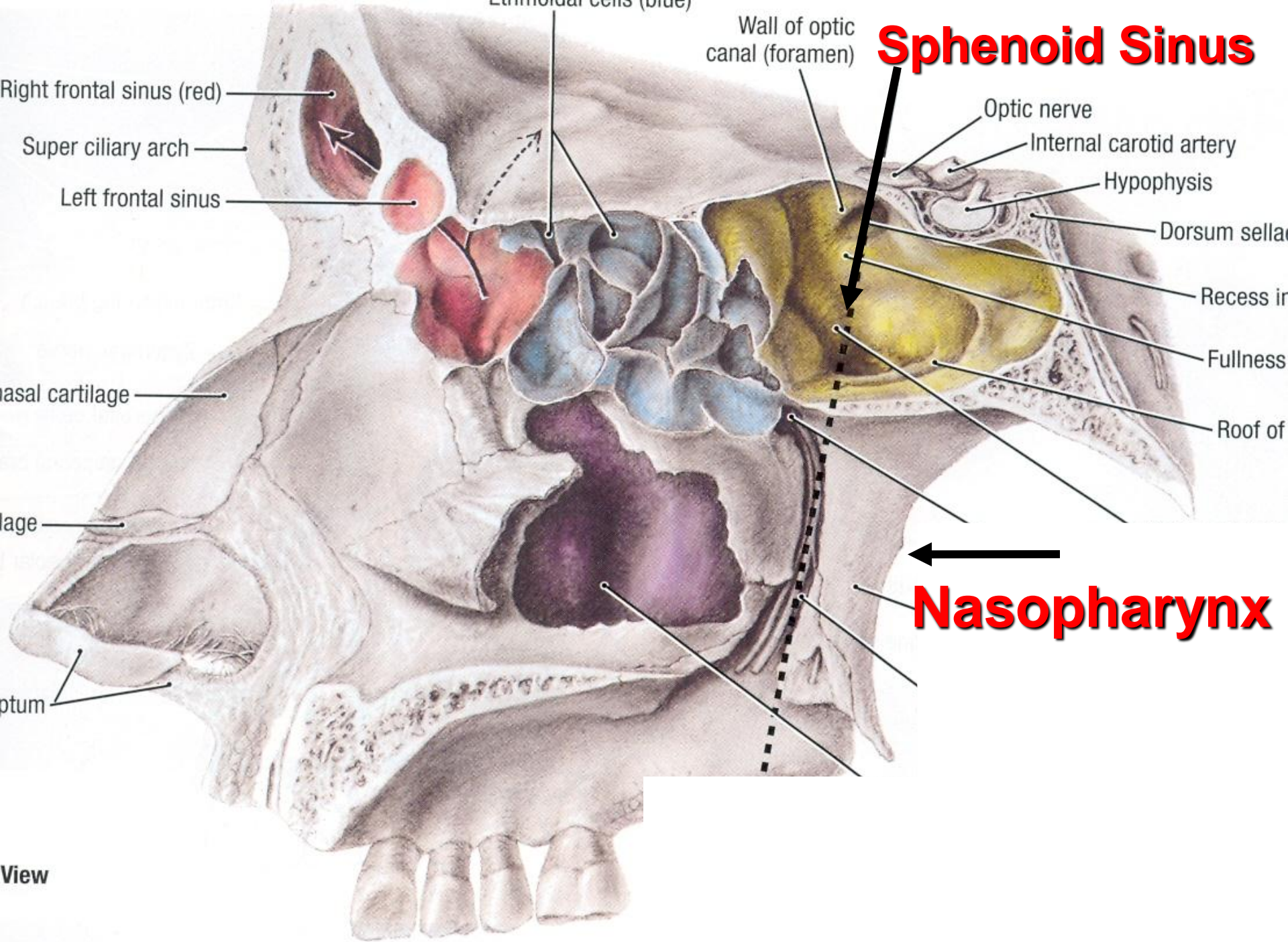
10

9

6

7

8



Sphenoid Sinus

Nasopharynx

Right frontal sinus (red)
Super ciliary arch
Left frontal sinus

Ethmoidal cells (blue)

Wall of optic canal (foramen)

Optic nerve
Internal carotid artery
Hypophysis

Dorsum sellae

Recess in

Fullness

Roof of

Basal cartilage

Plate

Optum

View

Sinunasal Tumors

- 1. Benign:** *Pigmented neuroectodermal tumor of infancy.*
- 2. Borderline:** Inverted papilloma.
- 3. Malignant:** *Schneiderian carcinoma (transitional), adenocarcinoma, melanoma, lymphoma (NK-T) adenoid cystic carcinoma*

Nasopharyngeal Tumors

1. **Borderline:** *Angiofibroma*

2. **Carcinomas:**

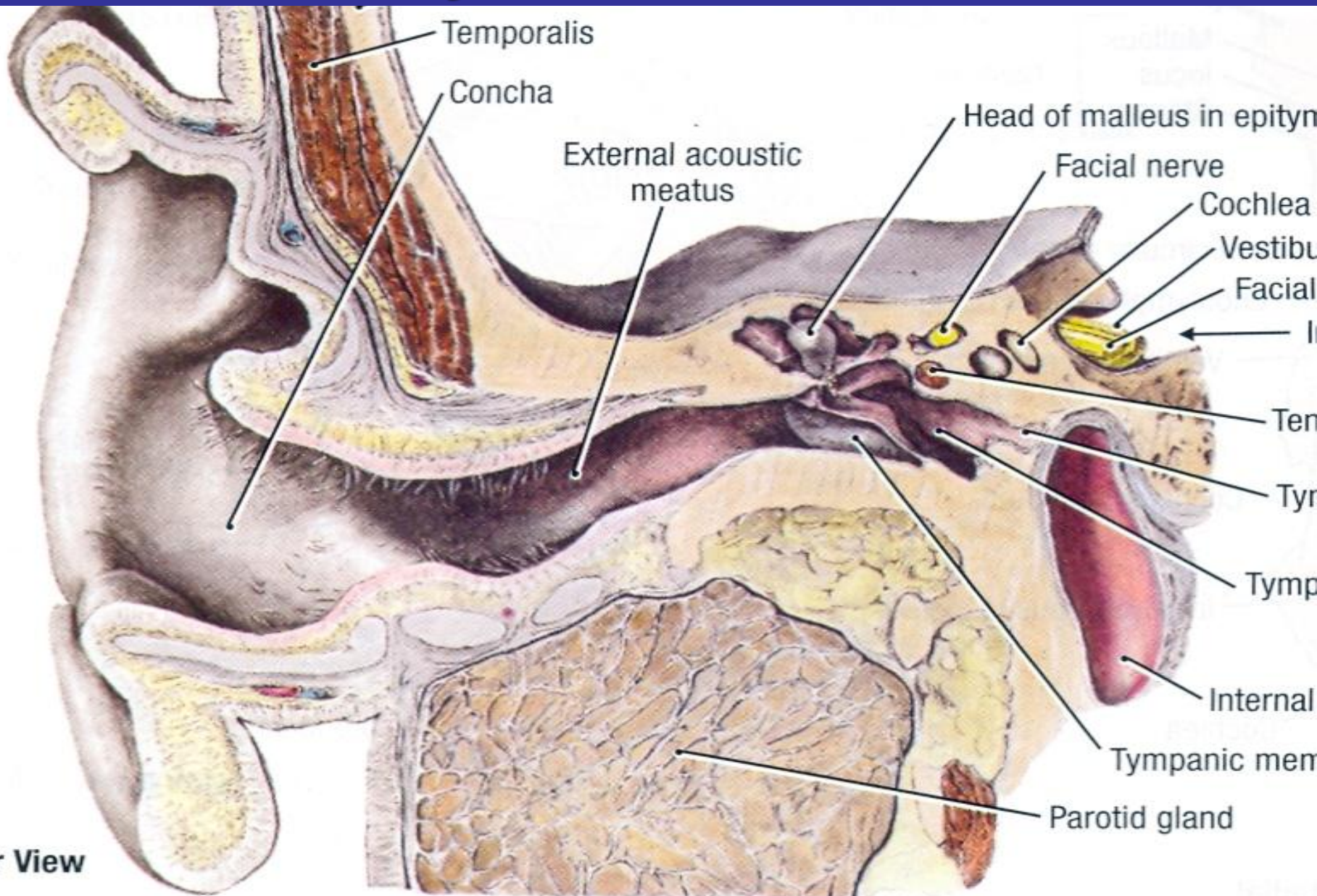
(WHO I) Squamous

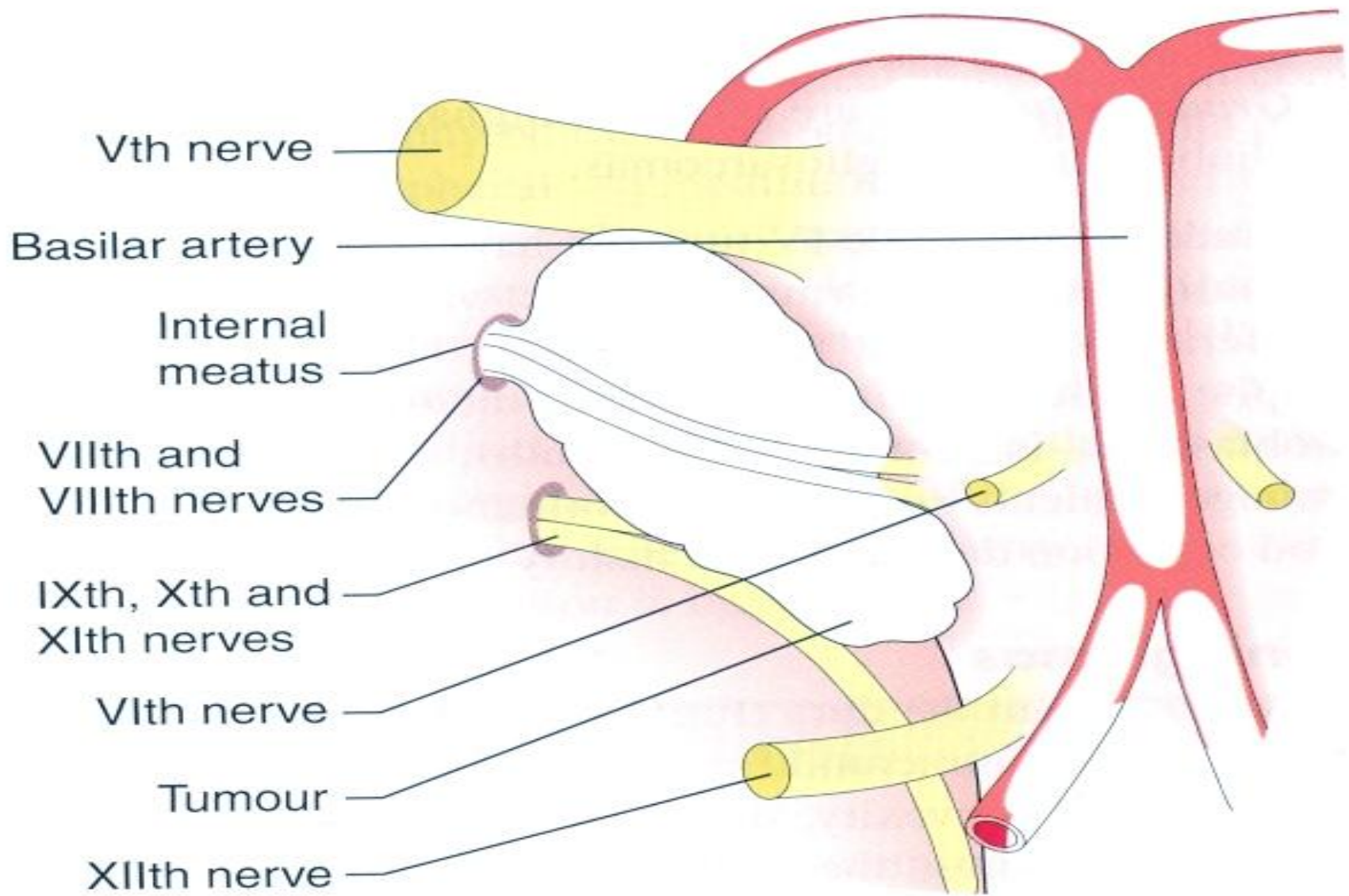
(WHO II) Schneiderian

(WHO III) Undifferentiated

1. **Lymphoma:** *Large B-cell type*

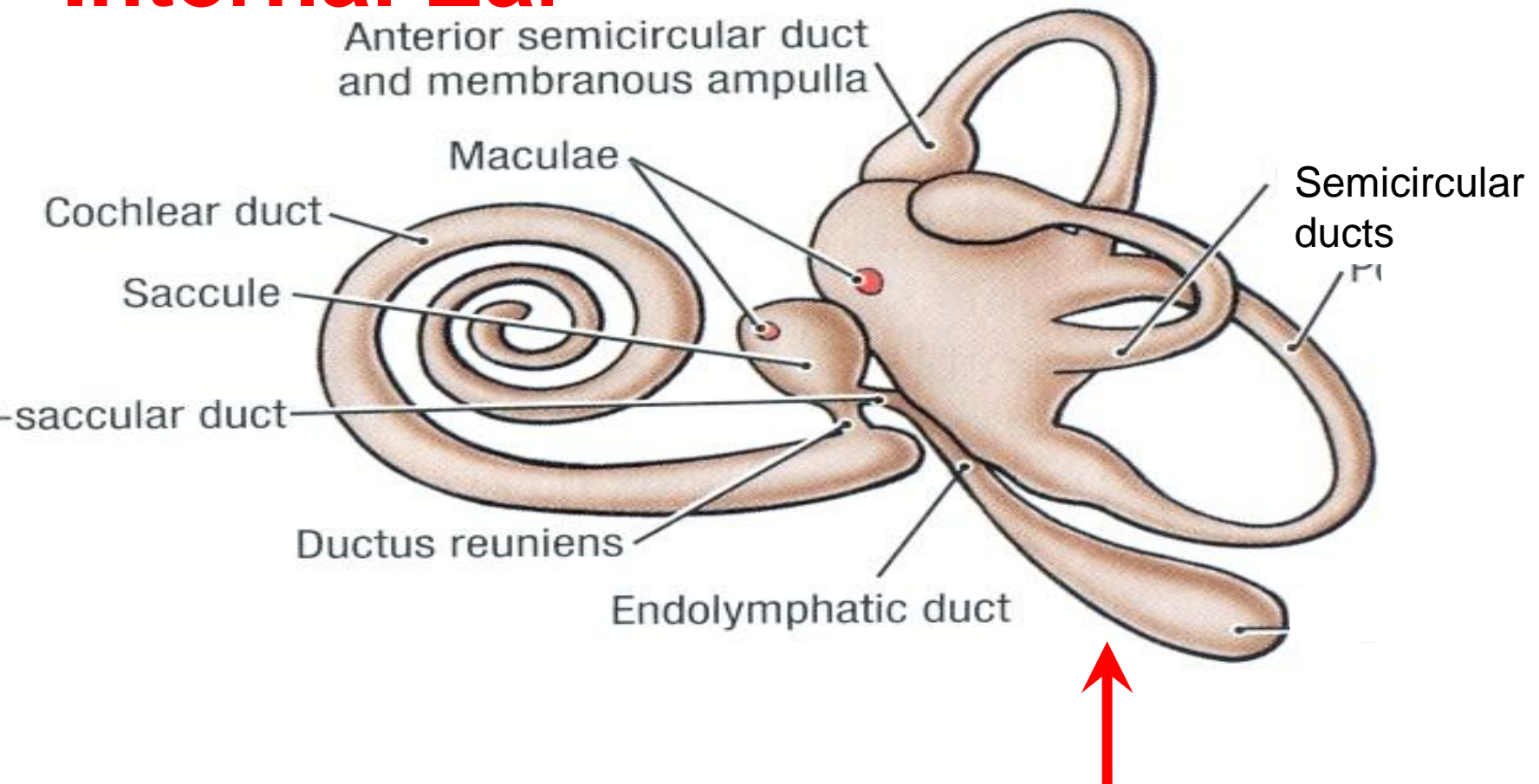
Anatomy & Relations of Ear





Acoustic neuroma (Relations to Cranial Nerves)

Internal Ear



Endolymphatic sac
A site of adenocarcinoma

Relations of Middle Ear

Middle cranial fossa

Posterior cranial fossa

Antrum

Attic

Mastoid

ET

TM

Stylomastoid foramen

VII

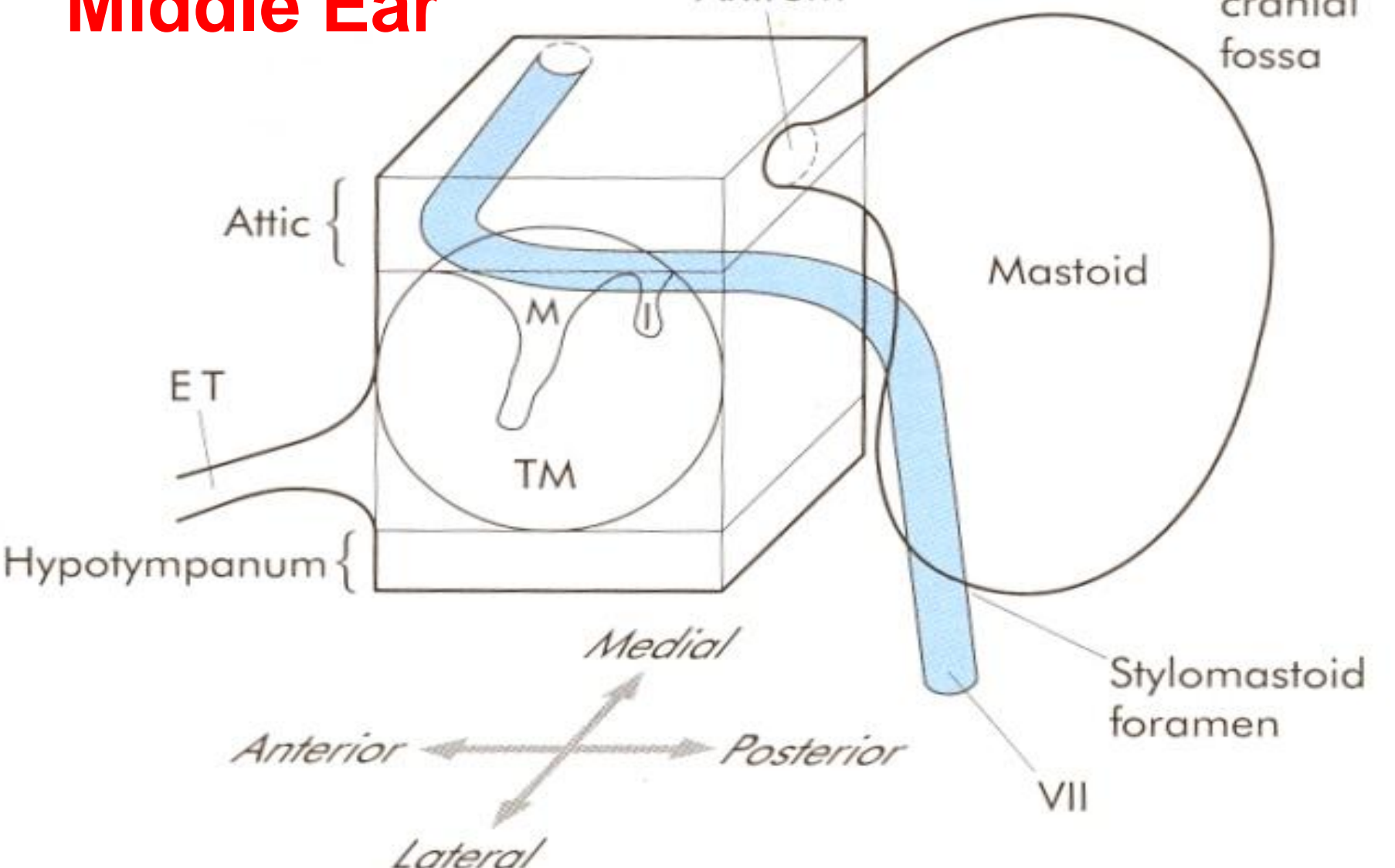
Medial

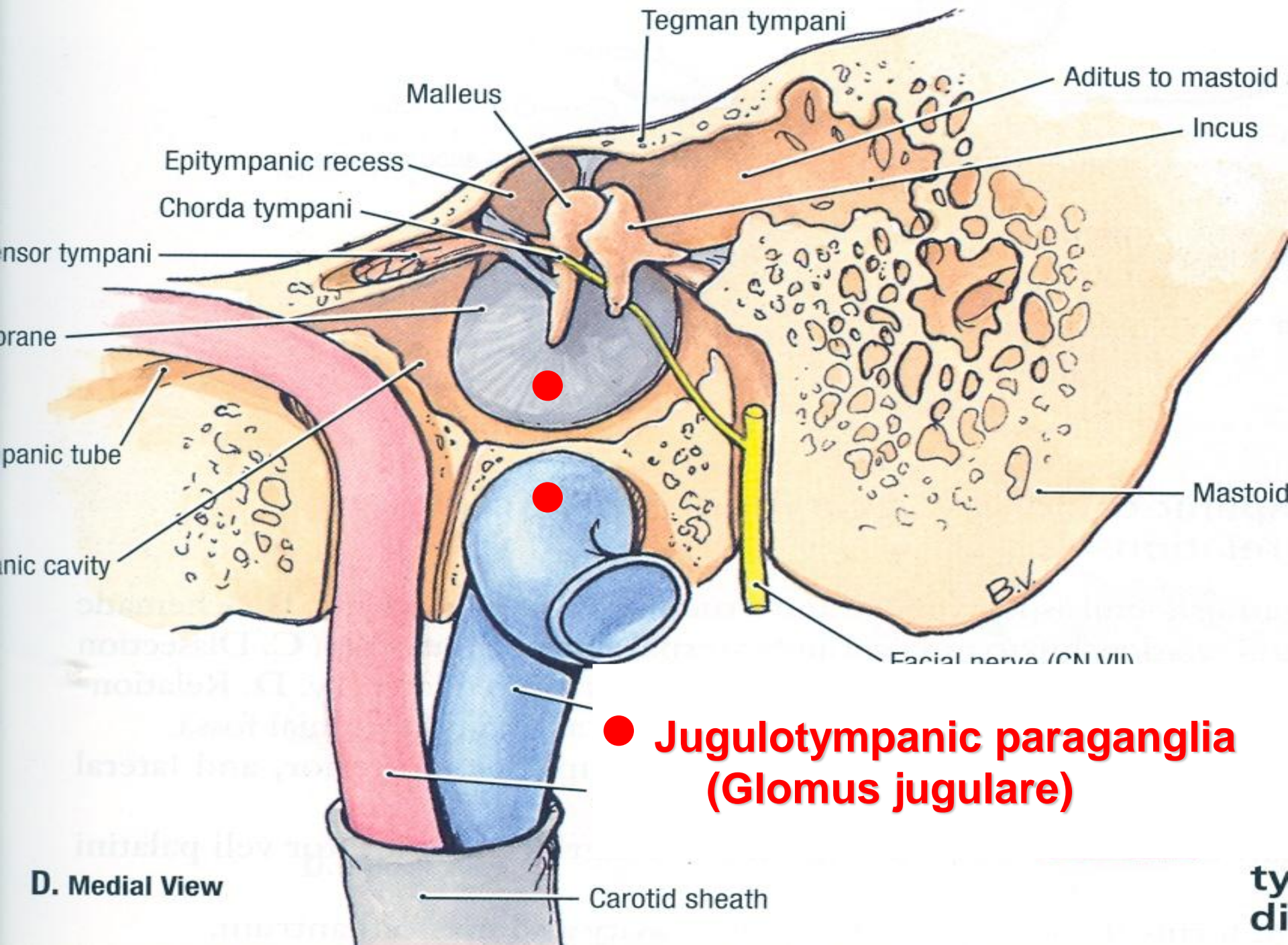
Anterior

Posterior

Lateral

Hypotympanum





Tumors of the Ear

1. External Ear: Squamous, basal & ceruminous carcinoma

2. Middle Ear:

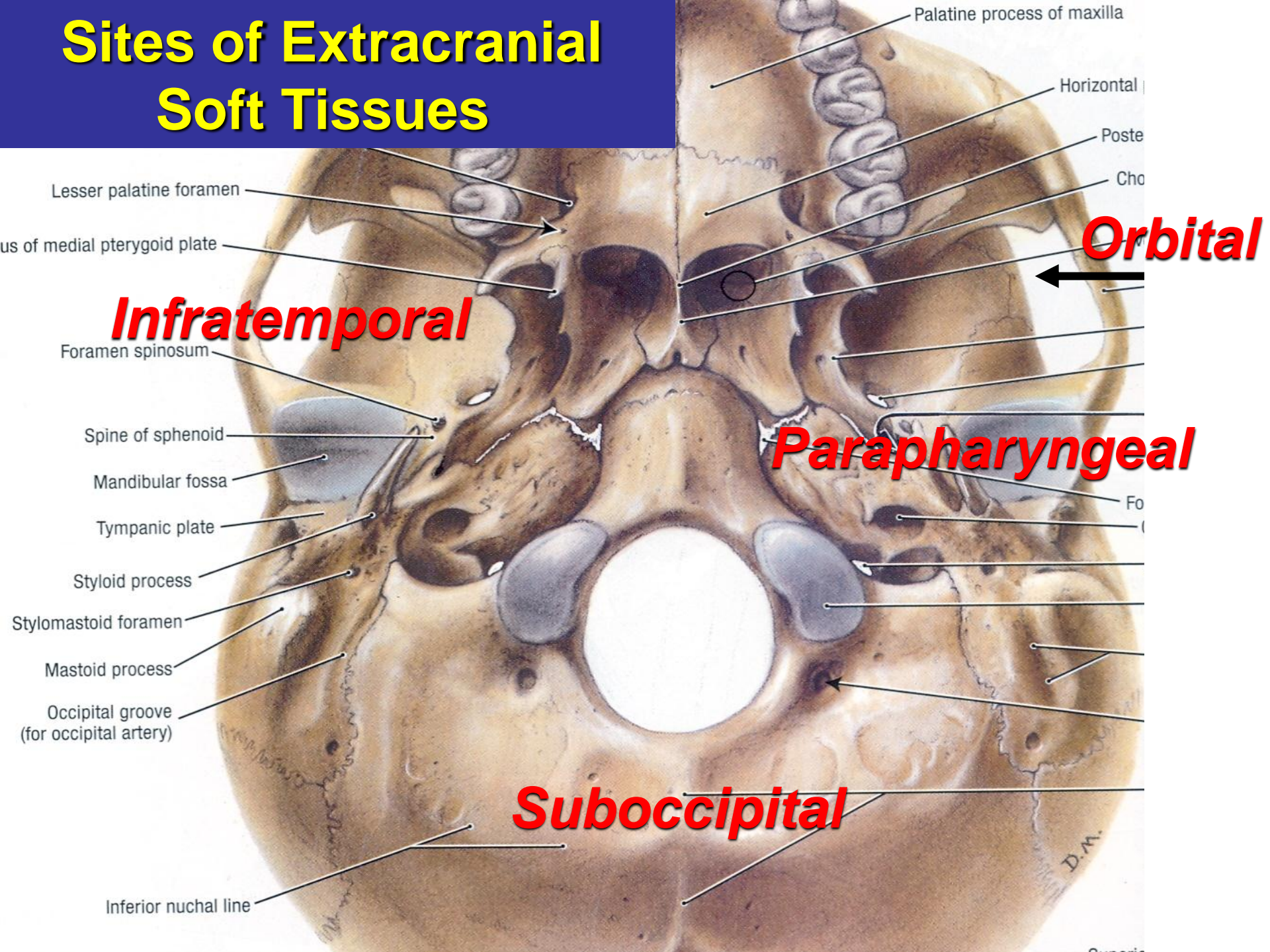
Hyperplastic: Cholesteatoma

Benign: Jugulotympanic paraganglioma

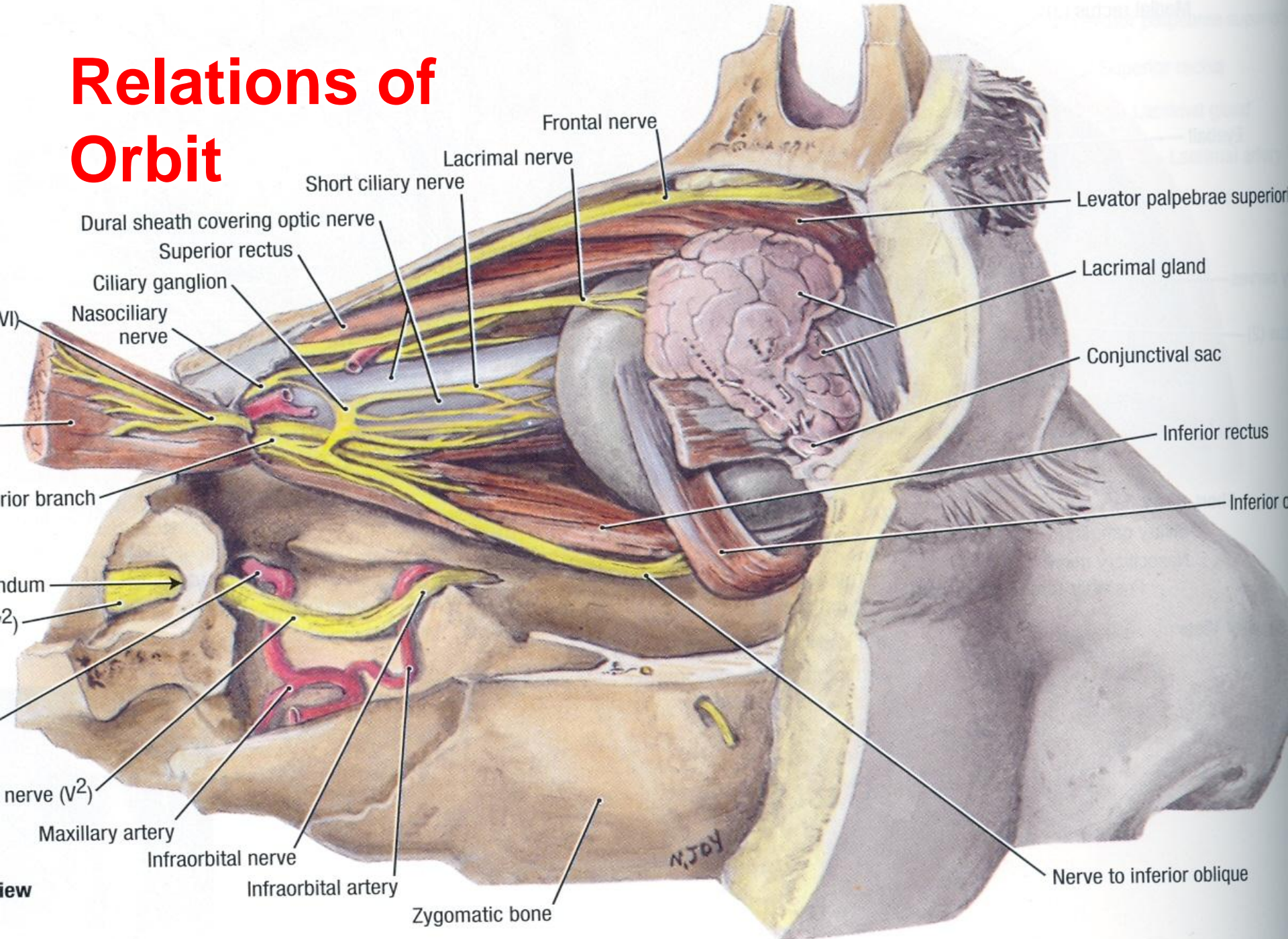
Malignant: Squamous cell carcinoma

1. Internal ear: Acoustic neuroma, meningioma and endolymphatic sac adenocarcinoma.

Sites of Extracranial Soft Tissues

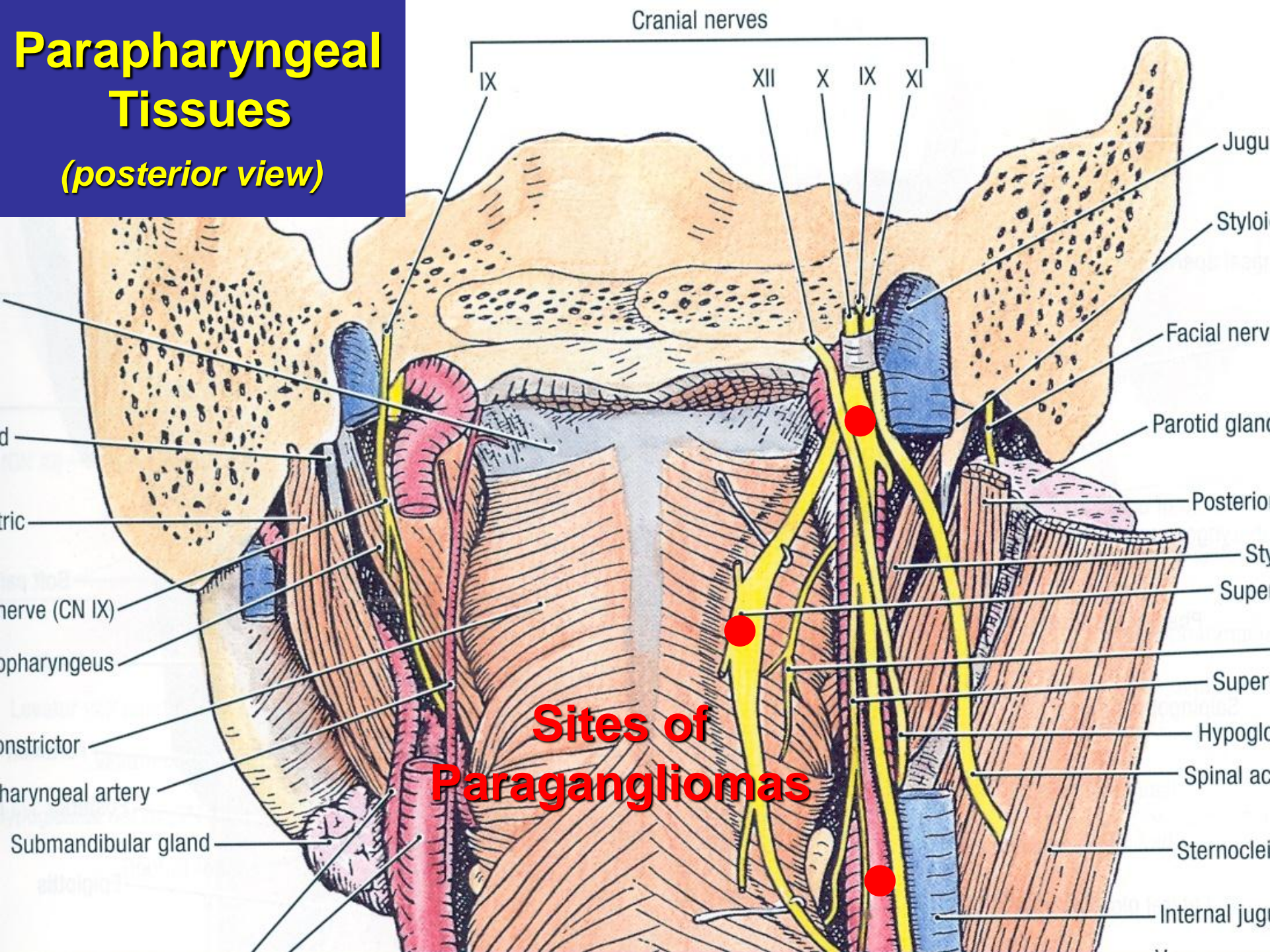


Relations of Orbit



Parapharyngeal Tissues

(posterior view)



Sites of Paragangliomas

Types of Soft Tissue Sarcomas Invading The Base of Skull

Mesenchymal

Rhabdomyosarcoma

Fibrosarcoma

Malignant fibrous histiocyoma

Neuroectodermal

Malignant paraganglioma

(vagal or cartoid origin)

Ectopic meningioma

Metastatic Cancer to Skull

Pediatric

Neuroblastoma

Adults

*Renal, Breast,
Lung, Thyroid*